

## Candidates Take Stands On Junior High Schools And New Building Plans

Belleville's school board candidates showed Monday night that although the town has passed a school building program, the issue is still very much alive and controversial.

Speaking at a P.T.A. meeting at School Five, the candidates split on opinions about a new senior high school and introducing a junior high system. Ralph M. Risoli, who has been insisting that junior high schools promote delinquency, said voters decided in favor of a new high school on Dec. 21 and not for a junior high setup.

Mrs. Norma McCool, Paul F.

## Dr. Di Ruggiero Praises Junior High System



DR. FRANK DI RUGGIERO

Dr. Frank Di Ruggiero, candidate for a third term on the Board of Education, attacked school trustees who he said were still involved in arguments against a junior high school. In a statement made this week, he defended the junior high system as the best means for curriculum improvement.

"Unlike the individual, a school system must not be permitted to grow old and outdated," he said. "It must keep pace with the forward march of progress. Too long Belleville schools have moved along slowly. Now they

## Lally Pledges Encouragement Of Town Interest

Dominic A. Lally, president of the Board of Education, who is seeking re-election, promised he would encourage and unify the active interest of town residents in school questions. Lally's speech was prepared for delivery at School Five P.T.A. meeting Monday night, at which board candidates spoke. Lally was unable to attend because of a special meeting that night for board members.

His speech was sent to the school for Mrs. Harry M. Burbank, president of the school's P.T.A. She did not receive the speech, however, and it could not be read at the meeting.

The two other incumbents seeking re-election, Michael V. Albertine and Dr. Frank Di Ruggiero, were represented. Dr. Di Ruggiero's statement was

## Risoli Charges Board Constantly Has 4-3 Block

Ralph M. Risoli, who has taken a strong stand against adopting a junior high school system, charged that such an educational transformation would be too costly and would create a sociological and psychological breakdown in schools and homes. Risoli is one of 15 Board of Education candidates.

"Did the present Board of Education stop to look into the pro-

Bernhardt and Paul Francisco said they would conduct a full study to determine if the present school should be used for a junior high, which the incumbent Board of Education has decided to do on recommendation of Columbia and Rutgers Universities. Bernhardt said he would make a study himself, "without hiring a single consultant." Francisco said the educational trend was away from junior high education. Mrs. McCool added the complaint that the Washington Avenue location of the present high school would make it dangerous for youngsters to reach.

Tom Del Guercio, an educated strict administration once the junior system were adopted "to determine the pitfalls of the junior high program" and thereby avoid them in Belleville.

## BETTER CURRICULUM

Those in favor of a junior high school system pointed to the improved curriculum made possible by Edward L. Wallock, Calvin Peck, John B. Di Rienzo and George H. Brown stressed the additional facilities and expanded program that could be initiated in science, language and mechanics, for example.

An issue that seemed to be forming concerns the position and relative importance placed on the Superintendent of Schools by board hopefuls. Wallock said he would support the superintendent within his area of responsibility. Peck, although he said he would not impede the superintendent, indicated he thought clear lines of authority were needed.

## Guglicelli Withdraws

Albert Guglicelli Jr., one of 13 Board of Education candidates, announced he was withdrawing from the board race. Although Guglicelli could not be reached for comment, his wife said he had decided not to run "at this time."

Unconfirmed rumors said he would now give his support to another board hopeful.

## Albertine Firm On Non-Partisan Basis Of Board

Michael V. Albertine, candidate for re-election to the Board of Education, emphasized this week his non-partisanship in the board race.

"A school-board member should be motivated by a strong sense of civic responsibility. His service to the community must be on a non-partisan basis since he represents all of the people," he explained in a statement.

"It is my firm belief that decisive action must be based on a

(Continued On Page 6)

Waltlock Gives Ten-Point Plan To Aid Schools

Edward L. Wallock, school board hopeful, outlined a ten-point "program of progress" for the Belleville system.

He pledged himself to:

1. Maintain our school system free from political interference.
2. Work toward a closer relationship between our school purchasing office and the Town Purchasing Agent in order to effect economies by resorting to joint purchasing wherever feasible in school questions.
3. Work for the establishment of a decentralized library service by bringing to each neighborhood, library facilities. This will eliminate the need for our central library.

## Francisco Says Heeding Citizens Is Necessary

Calvin Peck, school board candidate, pointed this week to his work as vice chairman of the Citizens School Building Advisory Committee as evidence of his interest in the future of Belleville schools and, specifically, the building program.

He also said he would not impede work of the Superintendent of Schools.

In a statement, Peck said: "I was born and raised in Belleville and educated in the Belleville schools. I have been employed by Public Service Corporation Transport for 26 years. For the past 16 years I have served in various supervisory positions and am presently in charge of operations at the company's Lake Street garage in Newark. During this time I have gained considerable experience in control of expenses, public relations,

## Peck Cites Work On Lay Advisory Building Group

(Continued On Page 3)

Boy Scout Troop At School Seven Gets Its Charter

A National Charter to conduct a Boy Scout troop will be granted to the P.T.A. of School Seven, announced Ernest S. Arvidson, chairman of the Belleville District of Robert Treat Council, Boy Scouts of America.

The new troop has 21 charter members. The P.T.A. has named Vito Zichelli as representative to the district committee and the Robert Treat Council.

Members of the troop committee are Henry Sierk, scoutmaster; George Wright, chairman; and Thomas Rosamelli and Matthew Rotondelli, committeemen.

Members of the district committee and other scouters are

## Carol Yudin Works Exhibited

Carol Yudin can see the things around her as stimulating and thought-provoking and as an artist she can transform them to her canvases and have the excitement of "seeing what mood they provoke in the people seeing them."

Mrs. Yudin of 131 DeWitt Avenue has been seriously pursuing her art career for the past 15 years. She is now primarily interested in "abstract" painting, but always with an object in mind," she says. "I abstract my work but never beyond the point of recognition."

Seventeen of her paintings are now being exhibited through January in a one-man show in the Guild of Creative Art in Shrewsbury, N. J. "The Old Toaster," one of the works in the show, exemplifies her abstract quality. She worked from a toaster and transformed it into a harmony of objects, recognizable and at the same time mood-provoking beyond the limits of the real objects.

"The Blue Balloon," striking and poignant was painted from memory after seeing a youngster holding a balloon, who created a mood for the artist. Her portraits, Mrs. Yudin feels, portray an even greater range of feeling than her still-lives.

A recent review of the exhibit by Michael Lenson, artist and critic, said, "Technically, Mrs. Yudin enjoys a sensual appetite for well-textured and glazed color and a sense of pictorial design. Her paintings were described as being 'both imaginative and mixed with strangeness.'"

Lenson, who lives in Nutley, has worked with Mrs. Yudin. "He

## New Medical Plan For Needy Uses Panel Of Local Doctors

A new plan for medical care of the indigent has been announced by Commissioner Nuncio R. Pico, director of the department of Public Affairs and John Hewitt, Director of Welfare.

"By law medical care is specifically identified as an item of need, authorized to be met," said Commissioner Pico. "We feel that the use of a freely formed group of local physicians will permit the operation of a physicians' panel."

The plan calls for the client to have his choice among all or many of the local physicians who will be remunerated on a fee basis for the medical service rendered. This method will preserve the principle of personal relationship, the commissioner said. Since much of the success of treatment depends on one's confidence in his physician's ability to diagnose his illness, full responsibility for the care of the sick person will be the primary concern of the physician. The physician's training and experience will be of maximum service and value to the client. It should make possible the selection of the best resources whenever continued care is indicated, he hoped.

This is a departure from the outmoded practice of assigning a single physician to administer the relief program. It will more adequately fill the needs of our indigents.

"Since our people have expressed their willingness for a change in our town government, we believe that this new procedure will prove to be forward looking and ultimately more economical," he said.

## Candidates To Speak At School 8 Tonight

The 13 candidates seeking membership on Belleville's Board of Education were invited to the P.T.A. meeting at School Eight tonight at 8 P. M. Each candidate will be given an opportunity to present his views on current school questions. Questions will be accepted from the floor. Ralston Josack, program chairman will serve as moderator.

(Continued On Page 6)

## No Accreditation Until Nov., But Middle States Sends Letter To Help H. S. Seniors

For the graduating class of 1961, loss of Middle States Accreditation on Dec. 31, 1961, was a serious matter," Dr. Frank M. Durkee, Superintendent of Schools said this week. "To help the students in their efforts to gain admission to colleges, the administration is taking certain definite measures."

"The high school has been given a letter from the Commission of Secondary Schools of the Middle States Association that will be attached to the high school transcripts of each student. This letter points out that the 1961 graduates will have spent three and a half years of their education in a accredited high school and that the school district is taking measures to remedy the overworkload and to build a new high school. In addition to the transcript of each high school student who is making application to a college for admission, there will be attached a complete record of his standardized test results. These include tests in reading, English, mathematics, differential aptitudes, Kuder preference

## Federal Engineers Visit Belleville As First Stop In Shelter Site Survey

Belleville will be one of the first three municipalities to be visited by Federal Engineers designated by the Office of Civil Defense in Washington, to participate in a nation-wide survey of fallout shelter sites.

At a meeting at Essex County Civil Defense Headquarters in Livingston, Ludwig R. Pesa, local C.D. Director was informed by Edward J. Trochanowski, representing the Federal government, that work on this project would begin this week in Belleville.

The government has already taken the first step toward a realistic Civil Defense Program by launching the National Shelter Survey, said Pesa. The survey will identify the approximately 50 million shelter spaces now available in existing buildings, tunnels

## 450 Volunteers Sought For Heart Month Drive

Joseph B. Grosch of 5 Nollan Street, recently named chairman of the 1962 Heart Month drive in Belleville, has issued a call for volunteers. More than 450 will be needed for the door-to-door canvass to be conducted throughout the residential area during the month of February. The drive will culminate on Heart Sunday, Feb. 25, which is the high point of the nation-wide four-week Heart Fund annual campaign.

"When the Heart Month army is fully recruited, it will be able to canvass all of the community's residential sections in a minimum amount of time with each volunteer calling on the families in his or her immediate neighborhood," Grosch said. "The volunteers will be divided into a number of groups, each group headed by a captain. Each volunteer will carry an official identification envelope."

(Continued On Page 2)

## Boy Scout Troop At School Seven Gets Its Charter

A National Charter to conduct a Boy Scout troop will be granted to the P.T.A. of School Seven, announced Ernest S. Arvidson, chairman of the Belleville District of Robert Treat Council, Boy Scouts of America.

The new troop has 21 charter members. The P.T.A. has named Vito Zichelli as representative to the district committee and the Robert Treat Council.

Members of the troop committee are Henry Sierk, scoutmaster; George Wright, chairman; and Thomas Rosamelli and Matthew Rotondelli, committeemen.

Members of the district committee and other scouters are

## Mayor Padula To Ask For Appeal Of County Assessment Decision

## Golden Demands Re-Assessment By County Board

James R. Golden, Belleville critic, has challenged the assessment figure set by the County Board of Taxation on Gruhin-owned property on Washington Avenue. He called for an appeal from the \$15,875 total real value assessment set by the county board.

Golden in a lengthy letter to Francis A. Byrne president of the County Tax Board asked for a clarification of the board's judgment.

(Continued On Page 3)

## Kiernan, Pico Want Higher Levy On Gruhin Property

Mayor Isadore J. Padula, director of the department of Revenue and Finance, said yesterday he was calling a special commission meeting "to suggest to the commissioners an appeal" of a \$5,800 and \$1,350 assessed valuation of Washington Avenue property levied by the Essex County Board of Taxation upon property owned by the wife of Commissioner Robert C. Gruhin.

RULETIN

The Board of Commissioners met at 5 p.m. yesterday and agreed by four votes to file an appeal from the Essex County Board of Taxation to the New Jersey State Board of Tax Appeal for an assessment made by the county on Washington Avenue property owned by the wife of Commissioner Robert C. Gruhin. Gruhin abstained from voting.

The assessment was placed upon the property by the county after a public hearing. The real value for 1960 and 1961 was set at \$14,000. This is the price Gruhin paid when the property was purchased from Congregation Ahavath Achim in 1960. Applying the 40 per cent of true value for assessment ratio, this would mean a \$5,600 assessment. The real value for the property for 1962 was set at \$15,875, which would result in a \$7,350 tax assessment. The increase over the 1961 \$14,000 value is due to alterations Gruhin has made to the building since acquisition.

Commissioner George F. Kiernan and Nuncio R. Pico said they would ask for an appeal. Commissioner Robert C. Gruhin, however, said yesterday morning that he had not seen the tax board's written judgment and could not make a decision until he saw "how the county arrived at their figures."

TAX BOARD HEARING

Maelyn Goldman, tax board commissioner, heard the case Dec. 28. The case came before

## Girl Scouts Set For Cookie Sale

Girl Scouts are making final preparations for their annual cookie sale, which begins Saturday, Jan. 7. Mrs. Anthony P. Moro of 80 Westinghouse Avenue is queen of the Belleville scout district.

Thirty troops of senior, intermediate and brownie scouts will be making door-to-door rounds for the sale, which will last until Saturday, Feb. 10. The 656 scouts here will make cookie deliveries from Feb. 22 to March 5.

The girls sold 17,210 boxes last year. Certificates were awarded

(Continued On Page 2)

## Zepka Succeeds Fell As Kiwanis Club President

Merv Haines, lieutenant governor of Kiwanis, installed local Kiwanian officers for 1962 at a meeting last Thursday. The lieutenant governor, the principal speaker, discussed the meaning and ideals of Kiwanis work.

He reminded members that although Kiwanis is not a fraternal organization, a political organization, or a religious organization, it would always be found fraternal in spirit, always align itself behind good political practice, and always act out of the inspiration of religious men. Tribute was paid to members, commended.

(Continued On Page 3)

No Map Prize Winner; Double Prize This Week

The youngster in last week's map game contest went unidentified so this contest is worth double the usual prize. Ten dollars will be awarded to the first person making the correct identification of this week's personality.



# Super Market Value

That old saw about the problems of coping with Sunday drivers in the supermarket has a modern version. Nowadays, isn't the driving that has work-ers groaning, it's the parking.

The four-wheel carts were quite a weapon to use as an anti-garage push into bargain sections, but now they have more varied uses. Women have converted the wire basket on wheels into laundry carts, garbage transporters, storage bins, cleaning utensils, trays and mop and broom holders. Ingenious youngsters have adapted them to newspaper deliveries and one school somewhere found them perfect for stockroom deliveries. The silver wonders have also been used by some for burning leaves—all these to the accompaniment of supermarket management wails as each cart backyards, behind houses, near

waste baskets, in parking lots and sometimes tucked neatly away in a garage. The last hiding place leads many to believe that some shoppers have their own personal cart that they take to and from the market with them, then park it away for the next buying trip.

There are some who believe a syndicate might be picking up the lost ones and selling them to stores at discount prices, but this is only one thought that adds a note of mystery to the daily searching party.

One supermarket has bought carts that do not fit through the doorway. Many markets station workers at the exits to watch the carts before they wander. But this can be a dangerous assignment in this racket. "I never know if I'm going to get a cart back or someone's going to cart me," said one doorman.

And the delivery boy standing next to him said as a woman came through the doorway with a cart, "Um, you know, I deliver."

# Recount Verifies Margin Of 81 Votes

The 81-vote margin by which voters approved construction of a new high school, was verified last Thursday by a County Board of Election recount. A school building program, which also includes all-purpose room additions to Schools One and Four, was approved 2,438 to 2,357 on Dec. 21.

The Citizens' Tax Council, opponents of a new school, had questioned the vote tally and demanded the votes be counted again. The recount, ordered by the Superior Court, was taken at the

Board of Election warehouse in Newark.

This was the second attempt made by the tax council to impede the December referendum. They failed last month to gain an injunction to postpone the voting.

The \$22,000 building program was defeated in an earlier referendum on Oct. 17.

Final plans and specifications are now being prepared by the school board architect, Alfonso Alvarez.

# Carol Yudin

(Continued From Page 1)



THE BLUE BALLOON

is my guiding hand and inspiration in his advice to me," she said.

Her works have been exhibited at the Essex County Show, where she was awarded a blue ribbon for a watercolor, Montclair Museum, Painters and Sculptors Society of New Jersey at the Jersey City Museum, Art Center of the Oranges, Knickerbocker Artists at the National Arts Club in New York, Monmouth College Festival of Art, Summit Art League, Clinton Art Center in

Hunterdon County, South Orange-Maplewood Art Center and Bamberger's Contemporary Art Show in which she now has two works on display. She was recently invited to become a member of the New Jersey Contemporaries Gallery in Hoboken.

Mrs. Yudin's husband, Wilfred, is her best critic, she readily says. "And he is my finest inspiration." The Yudins have a son, Robert, who is a cadet in the U. S. Navy, and a daughter, Diane, who is a freshman at the University of Miami. "And believe me, they're pretty good critics too," she adds.

# Boy Scout

(Continued From Page 1)

assisting in forming new scout units. In schools, churches, and other agencies desiring to provide the scouting program for their own or neighborhood boys and young men, a "Together Plan" organization project is being conducted by the Robert Treat Council.

An early step in the plan called for attendance of the institutional representative and five selected members at a "Together Plan" dinner at Robert Treat Hotel this past Tuesday.

Seymour Grossman, principal of School Seven, is serving as a member of the council-wide committee sponsoring the project.

# Volunteers

(Continued From Page 1)

"Heart Fund volunteers need no experience, although many who have already signed up have

served in previous Heart Fund campaigns," Grosch pointed out. "In addition to calling for Heart Fund contributions, volunteers perform a valuable educational service in distributing information presenting the latest knowledge about heart attacks, rheumatic fever, high blood pressure and strokes," he observed.

# VOLUNTEERS

The local chairman invited residents to volunteer by speaking with him.

"Service as a Heart Fund volunteer is a satisfying way of helping our Heart Association fight the nation's number one health enemy," he continued. "Those who volunteer may be sure at any time that they are helping neighbors who appreciate their efforts to distribute health-saving information. Furthermore, contributors find it simple and gratifying to help in the heart crusade by merely inserting a gift in the special Heart Fund envelope presented by the volunteer, sealing the flap and returning the envelope. In this way, the gift is personal and confidential."

Grosch is a teacher at the James G. Shawer School. He is active in the Knights of Columbus and Varsity Club, a member of the Navy League of the United States and Commanding Officer of Naval Reserve Surface Division 3-37 in Clifton. He also served as Heart Month Chairman in Belleville for 1960 and 1961.

# Shelter Site

(Continued From Page 1)

and other structures to provide protection from radioactive fallout.

# WIDE DISTRIBUTION

Many of these spaces in the central areas of large population would be exposed to destruction by blast and fire. The extent of a nuclear attack, but the pattern of attack cannot be predicted, and existing shelter is more widely distributed in relation to population than appears to the casual observer, he added. "Further this space is immediately available and the cost of identification, marking and stocking is less than \$4.00 per space."

All such shelter spaces, accommodating 50 or more people, would be open to the public in an emergency. They would be marked and stocked with essential food,

water, first aid kits and radiation detection instruments.

President Kennedy plans to seek further funds from the Congress to support a Federal Shelter Incentive Program in which the Federal Government would meet a substantial part of the costs of providing fallout shelters in schools, hospitals and of the public welfare institutions, Pesa also said.

# Peck

(Continued From Page 1)

personnel administration, and other management functions.

"I believe the loss of accreditation suffered by our high school is an extremely serious problem and only by sincere and honest effort can we bring back to Belleville the necessary accreditation."

"The school building program recently affirmed by the voters combined with conversion to a K-8-3 system will allow us to expand our facilities to meet the actual needs of our school children at the lowest possible cost to our taxpayers. It will eliminate the overcrowded condition at the high school, provide the necessary all purpose rooms at Schools One and Four, do away with the use of sub-standard

classrooms in our elementary schools, and help to provide additional room for needed libraries and expanded curriculum in the elementary grades. The fulfillment of these plans is necessary to properly equip our children to meet the demands of the future in college, business, or industry, whichever their choice may be."

# VICE CHAIRMAN

"As Vice Chairman of the Citizens School Building Advisory Committee I have worked diligently for the passage of the school bond referendum and it is earnest desire to expedite these plans as rapidly as possible to insure completion by September 1963."

"I feel we have a highly qualified superintendent of schools and it is not my intention to impede the administration of his duties in any way."

"I respectfully request your support on Tuesday, Feb. 13, 1962. Vote 3A on the voting machine."

# LIMITED SPACE

Because of space limits, campaign statements from organizations have been omitted. Space has been used instead, to present statements from individual candidates.

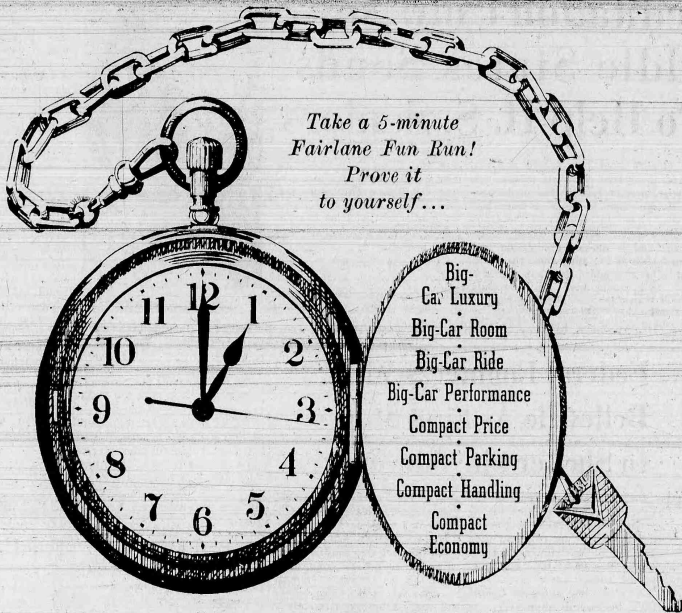
# ATTENTION LADIES...

Just from Europe, a scientific miracle in permanents for all types of problem hair, restoring life and sheen to it. This can be done through the new scientific invention in natural looking permanents which contain STRUCTURE 8.

4 DAY SALE — MONDAY Thru THURSDAY  
This Famous European Cold Wave  
Reg. \$15.00 **\$8.00** Reg. \$25.00 **\$10.00**  
WASH 'N SET

# Franco di Roma's World of Beauty

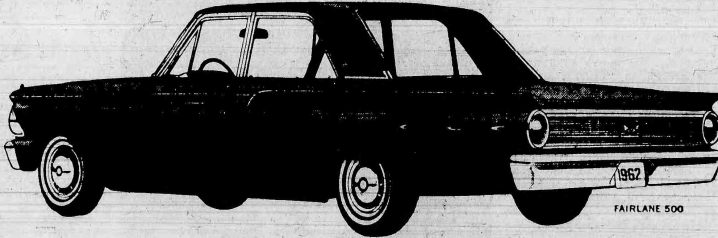
17 BELLEVILLE AVE. BLOOMFIELD  
Plenty of FREE PARKING at Acme Market Center  
Now Open: a Special Dept. for Children (Male & Female Hair)  
Open Daily 'til 6, Thurs. & Fri. 'til 9 PL 3-9890



Take a 5-minute  
Fairlane Fun Run!  
Prove it  
to yourself...

- Big-Car Luxury
- Big-Car Room
- Big-Car Ride
- Big-Car Performance
- Compact Price
- Compact Parking
- Compact Handling
- Compact Economy

# Only Ford Fairlane has the right combination of both



FAIRLANE 500

PLUS—Fairlane frees you forever from the expense and bother of frequent routine service!

Ford Fairlane—the newest new car on the road today—cuts most of the time, trouble and expense out of taking care of your car! It needs routine service—an oil change and minor lubrication—only twice a year, or every 6,000 miles. Major lubes are on a 30,000-mile schedule. Brakes adjust automatically. The finish never needs waxing. You save the money more frequent service

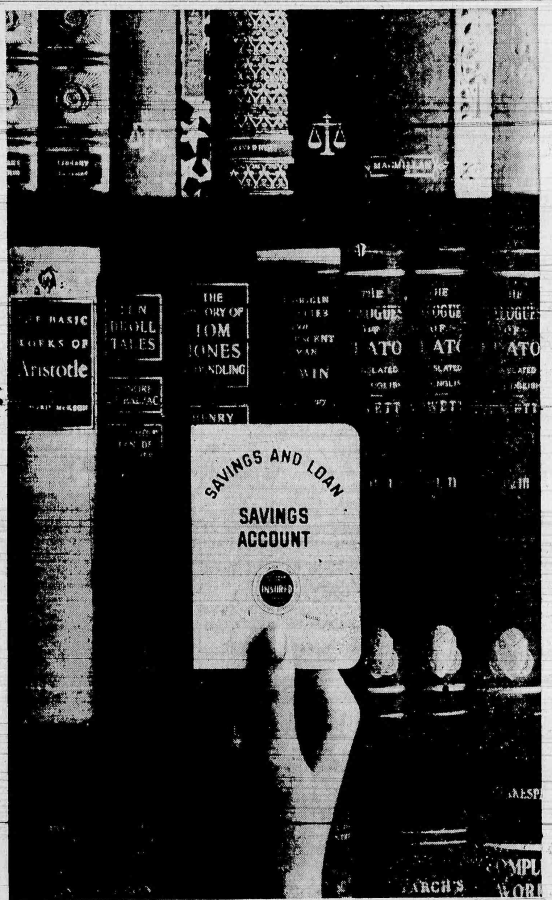
Do yourself a favor...  
Drive a Ford Fairlane  
at your

# FORD DEALER'S now!

# GEORGE H. MEAD, INC.

515 Washington Ave.

Belleville N. J.



# BOOK OF THE YEAR

This savings and loan passbook is nonfiction. An exciting true story of thrift that benefits individuals, communities, and business everywhere. Enjoyed by 29 million Americans who save at Insured Savings and Loan Associations. Each member of the family should have his own copy. Get your copy by opening a savings account with us.

# DeWitt Savings & Loan Association

463 WASHINGTON AVE. cor. Tapan Ave., BELLEVILLE, N. J.  
Daily 9 to 4. Also Monday Evenings 6:30 to 8:00 PL 9-5264

MEMBER OF THE SAVINGS AND LOAN FOUNDATION, INC. SPONSOR OF THIS ADVERTISEMENT IN LIFE AND THE SATURDAY EVENING POST





## Zepka

(Continued From Page 1)

minutes, chairman and officers who worked for a successful 1961. Thomas J. McLaughlin was program chairman.

The following officers were installed: Immediate Past President, Joseph G. Fell, President, John W. Zepka, First Vice President, Victor Cali, Second Vice President, Thomas J. McLaughlin, Treasurer, Louis Diaz, Secretary, Russell F. Hopkins. Newly appointed to the board of directors were John McKee, Sam Pearl, and Andrew Providence.

Michael J. Rosamella was installed as a member. He is a life-long resident of Belleville. Now serving as General Supervisor of Schools, he was head of the Social Science Department at Belleville High School, served as a guidance counselor and was active in Recreation Department work.

Zepka said he saw his presidential role as that of manager of a team, and viewed his committee chairman as coaches. "I have a great coaching staff, a great team, and we are going to have a successful season," he added.

He announced the following committee leaders: Boys' and Girls' work, John McNally; Vocational Guidance and Key Clubs, Robert E. Cook; Agriculture and Conservation, Andrew Providence; Support of Churches, Eugene Barnett; Public and Business Affairs, Laws and Regulations, Charles H. Tedesco; House and Attendance, Kiwanis Education and Fellowship, Sid Lebowitz; Music, Andrew Verhagen; Public Relations, Walter Bryant; New Club Building, John Zepka; Inter-Club and Conventions, William "Pink" Mership; Membership, Fred Krauss; Programs and Achievements Reports, Victor Cali.

Serving on the Board of Directors in addition to the new members are Walter Rajca, John Dragnet, Fred Krauss, George Wright, Edward Abramson, William King.

Club Past Presidents are Russell Hopkins, Edward J. Abramson, Kenneth D. Smith, Frank J. Bolen, William Kirk, and Joseph G. Fell.

## Di Rienzo

(Continued From Page 1)

In the welfare of our school system.

"I first became a member of School Five P-T-A. Next I served as treasurer of number five P-T-A for two years, then as president of the same organization for two years. I am still a member of the executive board of number five P-T-A. More recently I have served as chairman of sub-committees of the Citizens' School Building Advisory Committee.

## Accreditation

(Continued From Page 1)

## PLANS FOR SEPT. '62

officers and personnel department in business and industry."

"In a letter from Mr. R. D. Matthews, Chairman, Commission on Secondary Schools, Middle States Association, Jan. 8, it was pointed out that Belleville might appear before the Secondary School Commission in November, 1962, to show any efforts that have been made to reduce serious overcrowding to reduce class size and to make additional curriculum offerings available to students. Dr. Matthews' letter to Dr. Durkee stated:

"The full Commission spent much time in considering its action relative to Belleville High School. The warning given in the Official Letter was noted but the report of the Committee of the Commission action. I do not feel justified in referring this matter to the emergency committee until some evidence is available to show that the points made in the letter of November 15 are no longer valid."

## MAKE CHANGES

"If you will reduce the seriousness of overcrowding, increase the opportunity for students to have an expanded program or present program available to them, and reduce the size of classes, I shall be happy to present these changes to the Commission at its meeting in November 1962. In the meantime the letter which is attached may be of help to your present studies."

"I do not believe either the emergency committee or the Commission will suspend the action until something has been done to improve the situation which caused the school to be dropped from the List."

"If there are further questions, I shall be happy to try to answer them."

"The superintendent, general supervisor, and the high school staff are involved in planning the program for September, 1962. It is hoped that some plans can be developed which may result in giving the high school at least a probationary status as far as accreditation is concerned, until such time as the new high school is completed in September, 1963," Dr. Durkee concluded.

## Waltcock

(Continued From Page 1)

children to travel great distances from home to the town library on Washington Avenue.

"4. Encourage the appointment of a committee of competent citizens to explore the possibility of consolidating existing school facilities that may be economically unsound, thus producing economies in the operation of the school system."

"5. Support the policy of making promotions in our school system from within the system."

"6. Accommodate the reasonable wage demands of our administrative and teaching staffs commensurate with the ability of our taxpayers to absorb the costs involved."

"7. Work toward a goal of awarding pay increases based upon merit system."

"8. Oppose the adoption of any gag-rule aimed at curbing public statements from our Superintendent of Schools."

"9. Support the Superintendent of Schools within the area of his authority and responsibility."

"10. Oppose the creation of factions or cliques on the school board seeking dictatorial control of our school system."

## Risoli

(Continued From Page 1)

posed situation or, do they intend to pull another Pearl Harbor trick on the poor people as they did on Dec. 21, 1961 in passing the high school referendum?" he asked in a statement this week.

"Let us look at the record. At the moment there are 1581 children in our present school. The 10, 11 and 12-graders total 1,102. Put them in the new high school leaving the ninth grade with a total of 439 pupils. If we are to take the children from the seven and eight grades of all our elementary schools (a total of 822) plus the 439, to give a total of 1261 plus the children from St. Peter's and St. Anthony's it will run over 1,400 children in all. In view of the above, won't we still be overcrowded? What will the Board of Education do—build a new junior high school? Who is kidding whom?"

CONTROL BOARD

Risoli said "to re-eject the incumbents or anyone of the hand-picked sponsored A. B. C. candidates would create a catastrophe on our Board of Education. At the moment it is a known fact that in the Belleville school system three incumbents control the present Board of Education with their constant four to three block. On the other hand, there are three A. B. C. members now serving on our present Board and to elect one of their sponsored A. B. C. candidates would

give them complete control of the Board of Education."

"Where do we go from here? We will be right back where we started from—Nowhere!"

"This is contrary to all democratic principles upon which our democratic ideas are based. I am an independent candidate connected with no party or groups. I will at no time be obligated to vote on educational or financial issues on policies because I publicly state here and now that I owe no allegiance or obligation to anyone except the children and the people of Belleville."

"I further state that if elected I will continue to stand alone. If necessary, for the betterment of education and the democratic principles by which our country is founded."

## Padula

(Continued From Page 1)

him as a result of an allegation by James R. Golden that the former synagogue property was being privately owned by Grubbin.

At the hearing, the town sought a \$2,231 judgment against Mrs. Pauline R. Grubbin for 1961 taxes based upon a true value of \$65,000 determined by J. Clemenshaw Co., professional appraisal firm. This tax bill was based according to a former law on taxes, the eminent property assessment. The complaint against Mrs. Grubbin was for 1961 on the grounds that the deed to the purchase was dated Dec. 1, 1960. The congregation was billed for six months back taxes because the town alleged the building was not used for religious purposes after June 1, 1960.

Goldman's decision issued last week called for the congregation to be billed for three months taxes, rather than six. In addition, he had to decide how much the property should be assessed. At the hearing, Grubbin heatedly contested the \$65,000 assessment placed by the town on the property.

FIRST JUDGMENT

The judgment by the county authorized "the Tax Collector of the Town of Belleville to add an assessment of \$14,000 for the year 1960 and an assessment of \$16,800 for the year 1961. This was interpreted by town officials to mean that, based on the 40 per cent assessment ratio at which property is taxed, Mrs. Grubbin would be billed for taxes based on a true value of \$35,000 for 1960 and \$39,087 for 1961."

Thomas C. D'Avella, town attorney, immediately advised Mrs. Grubbin of the tax assessment. A corrected judgment, however, was mailed by the tax board Thursday with the true value and assessed value spelled out.

Based on the first judgment, Mrs. Grubbin would have owed a total of \$2,525 in taxes. The amended judgment bills her for \$484 for 1961. The congregation, according to the second judgment, owed \$114.

Kiernan and Pico both considered the assessment too low. Golden has asked the county to re-examine the value of the property, contending the final tax levy was entirely too low and unfair to other Belleville taxpayers.

IMMEDIATE ACTION

In separate statements yesterday, Pico and Kiernan expressed their intentions to seek immediate commission action to compel Padula's Revenue and Finance department to appeal the County Tax Board decision to the New Jersey State Board of Tax Appeals.

"Feb. 1 is the deadline for the town to make an appeal from this outrageous decision," said Kiernan. He concluded his statement with "I am requesting Revenue and Finance Director Padula to take the necessary steps to prepare appeal papers in time for our next regular commission meeting scheduled for Tuesday night, Jan. 23."

Pico complained that permitting the County Tax Board decision to stand would immediately open the floodgates to wholesale appeals from Washington Avenue property owners in the former synagogue area.

"I wouldn't blame the Washington Avenue property owners for appealing their own tax levies if we accept as final the County Tax Board decision on this Grubbin-owned property," said Pico.

"If the Washington Avenue business assessments are too high it's time we knew about it. The only way all taxpayers would be guaranteed a fair deal is if we appeal the decision to the state officials," he said.

## Francisco

(Continued From Page 1)

"It's best for the student or it's best for the education" who would continue to throw up this veil of smoke to hide incompetence and extravagance."

"Maybe there are those seeking election only because they feel it will be personally beneficial to their own career, business or social position. There may be some running on the issue of the new high school even though the voters have already apparently resolved this question. There are even those perhaps who have let their cause dwindle down to one of 'Experience in office' although from the way the board has operated in the past—the citizens of Belleville would do well without this brand of experience. By really letting one's imagination wander, you might even say we have 13 dedicated, competent, disinterested, hard-working, willing candidates who individually feel they are most able to accomplish the job."

"On Feb. 13, the citizens of Belleville must decide which three candidates are most worthy to sit on the board. I can only caution that the selection not be made on the basis of what the candidate says he shall do, but on what his actions, both past and present, indicate he will do."

"I, along with Norma McCool and Paul Bernhardt, am running with the Citizens' Tax Council endorsement. We have published a platform with our objectives clearly stated: I feel my educational background, work experience and knowledge of local governmental affairs acquired through my work with the Citizens' Tax Council, has given me the necessary preparation to serve on the board. If elected, I pledge:

1. To have the courage of my conviction and speak out on any issue with-out concerning myself about the number of votes I will lose at the next election.

2. To listen to and consider the petitions of any town citizen, a privilege granted to all Americans under the Bill of Rights; although some local officials seem to be unaware of this right.

3. To question every expense and return to a business-like approach in the administration of the school system so as to reduce the impact on already overburdened taxpayers.

4. To not consider the position of Superintendent as being sacrosanct but one of being fully answerable to the board for all its actions, expenses and results.

5. To seek to return to stressing the fundamentals of education so that our children will be assured of a solid foundation of knowledge that will enable them to better cope with the challenges of life."

"In closing, I personally make this plea to all Belleville citizens: Don't be careless with your voting privilege, for then we all end up with careless government. Vote for whomever you will, but please make every effort to get out and vote on Feb. 13."

## Golden

(Continued From Page 1)

ment and asked how he could enter an appeal if the board did not reexamine the case.

Golden insisted that that standard of taxation-ratio was permitted to stand, it would dislocate all property assessments within the town and lead to a deluge of tax appeals from irate taxpayers.

Letting the matter drop without town action to resist the acceptance of the assessment, Golden said, would constitute a gross miscarriage of equity and impose upon the people of the community the un-American policy of selling up preferred political citizens and second rate property, which constitutes most of us who are not office holders with special privileges."

OWN HOME ASSESSMENT

Citing his own home, assessed at \$15,000 real value, Golden complained he could not rationally accept that his residence on a site residential street should be taxed just below the assessed value of a spacious masonry building on the main-business street of town."

Golden's letter to Byrne read: "Recorded judgment rendered apropos to Grubbin vs. Town of Belleville anent synagogue confusion. Kindly advise INTENT of authorization to the tax collector of the Town of Belleville to add an assessment of \$14,000 for the year 1960 and an assessment of \$16,800 for the year 1961."

"Does this mean town may assess affected property at 40 per cent of true value at figures cited above, to wit \$14,000 and \$15,875 which would place real value of property at approximately \$38,000 or does it mean that the pro-rata real value has been adjudged arbitrarily by your Board at \$14,000 and \$15,875 with a 40 per cent assessment of \$5,600 and \$6,400?"

"In the event that the ridiculously unconscionable low figure at 100 per cent valuation has been established by your body at \$14,000 and \$15,875-level, advise time limit within which appeal may be taken from your Board's verdict and if an interested taxpayer, such as myself, may institute such action."

DISLOCATED RATIO

"Sir, should the lower assessment figure prevail the entire ratio assessment valuation for taxation purposes within the Town of Belleville will become dislocated with a resultant deluge of tax assessment appeals from irate and indignant taxpayers."

1. To have the courage of my conviction and speak out on any issue with-out concerning myself about the number of votes I will lose at the next election.

2. To listen to and consider the petitions of any town citizen, a privilege granted to all Americans under the Bill of Rights; although some local officials seem to be unaware of this right.

3. To question every expense and return to a business-like approach in the administration of the school system so as to reduce the impact on already overburdened taxpayers.

4. To not consider the position of Superintendent as being sacrosanct but one of being fully answerable to the board for all its actions, expenses and results.

5. To seek to return to stressing the fundamentals of education so that our children will be assured of a solid foundation of knowledge that will enable them to better cope with the challenges of life."

"In closing, I personally make this plea to all Belleville citizens: Don't be careless with your voting privilege, for then we all end up with careless government. Vote for whomever you will, but please make every effort to get out and vote on Feb. 13."

"I do feel that if the Essex County Board of Taxation rules that the property under discussion is to be assessed at only \$15,875 at 100 per cent valuation that it subjects itself to considerable ridicule because of its unrealistic and obviously, improvident findings which are out of all symmetry with existing assessing ratios within either the town or the County. In view of the same, respectfully request that your honorable Board proceed to forthwith reexamine and review anew all phases of this matter with a view to correcting any inequity which would redound to the public of the Town of Belleville should the lower 100 per cent valuation of \$15,875 be placed upon the affected property by decree of your Board."

Kindly advise me in writing at your earliest convenience of the information I have herewith requested. Thanking you for your kindness, I beg to remain, Respectfully yours, James R. Golden.

## WHO Buys Aluminum Screens Or Jalousie Porches In The Winter Time?

## Only The Really Smart Buyer

The person who buys furs in July—summer clothes in October—winter clothes in the summer. These are the wise buyers who save loads of money. In aluminum products these same smart people buy the products they know they will need next summer right now—and make tremendous savings over the regular summer prices.

You may be thinking of a brand new Florida Room just think, a beautiful enclosure for your Spring—Summer—Fall outdoor living comfort. The Florida Jalousie enclosure triples your backyard pleasure. You eat, sleep and relax outdoors without flies and mosquitoes—protected from the sun and rain and cooled by the breezes.

Average homeowners will buy aluminum screens and comb. windows this summer at our regular prices. But for you, our customer, all this is yours at our low-low winter pricing—only pennies a day.

Of course you may already own aluminum storm windows, or a Jalousie porch. If so, you may be planning to get another door-hood, more windows or some aluminum railings, perhaps a shower enclosure. If so, now is the time to buy. All of our products are available at low-low winter prices.

Now! Right This Minute! Pick Up The Phone And Call PL 9-1161

Or visit our showroom at 164 Washington Avenue. A factory-trained engineer will give you a free estimate of your needs with absolutely no obligation on your part. But, you must act now, while our winter prices remain in effect.

Yours for bigger savings

**KING of BELLEVILLE, INC.**

164 Washington Ave. PL 9-1161

Serving Nutley Belleville for 12 Years — Open Friday 'til 9

## MID WINTER SALE

## STRIDE RITE SHOES

## DISCONTINUED STYLES

20% to 40% Reduction

## FLORSHEIM MEN'S SHOES

## SELECTED STYLES

\$16.80 - \$18.80

## HIGH GRADE MEN'S AND BOYS' SHOES

## BATES - LUCEY - GERBERICH

## AND OTHER FINE SHOES

Reduced 20% to 40%

Doctors' Prescriptions Filled

## Paul's Shoe Shops

153 WASHINGTON AVE.  
BELLEVILLE CENTER570 BLOOMFIELD AVE.  
BLOOMFIELD CENTER

## R

## YOUR PRESCRIPTIONS CONTAIN \*T. L. C.

Incorporated in every prescription a pharmacist dispenses is \*T. L. C. (Tender Loving Care). For we know you have entrusted us with your better health, even your very life, when you bring a prescription to us.

When we are sick, we realize how important a medicine can be. You can depend on us to take the same care for you as we do for our own self and family.

YOUR DOCTOR CAN PHONE US when you need a medicine. Pick up your prescription if shopping nearby, or we will deliver promptly without extra charge. A great many people entrust us with their prescriptions. May we compound yours?

## ABBOTS DRUG STORE

551 Washington Ave. Belleville, N. J.

Reliable Prescriptions

PL 9-8181



**STRENGTH . . . through FIRE**

Like iron, strong men and strong institutions come through fire . . . the stronger.

For over forty years, the Peoples National Bank and Trust Company has weathered war, depression and panic only to emerge stronger from every trial. You can put your confidence in the Peoples National Bank and Trust Company for all of your financial needs.

**BANK SAVINGS NOW EARN 3 1/2%**

## PEOPLES NATIONAL BANK AND TRUST COMPANY

237 WASHINGTON AVENUE

BELLEVILLE, NEW JERSEY

Parking for Customers Across the Bank Building

Member Federal Deposit Insurance Corporation

Member Federal Reserve System



# Weddings And Engagements Highlight Belleville's Winter Social Season

## Miss Joyce Zena Competes For Miss Snow Queen Title

Fourteen girls have been nominated as Snow Queen candidates for the Essex County CYO's 17th annual Snowball Dance at Seton Hall University Saturday, Jan. 20, at 8 p.m.

This year's dance will take on an international flavor with two candidates, born in a foreign country. St. Peter's, Belleville, local queen is Miss Joyce Zena, who was born in Japan, while Our Lady of Fatima CYO has named Miss Teresa Silva, who was born in Portugal.

Miss Zena is social chairman of the St. Peter's CYO and a Sophomore at Belleville High. She hopes to be a commercial artist and designer.

The new Snowball Queen will reign over all of the CYO's 1962 social events. She will be determined by the CYO group which sells the greatest number of tickets to the dance.

The 1961 Queen, Miss Patricia Orlando of St. Peter's, Belleville, will crown her successor before an estimated 1500 teenagers.

The winner will receive several hundred dollars in gifts, as well as a weekend in Washington, D. C., with all expenses paid.

## Engaged



MISS BARBARA LEMP

Mr. and Mrs. Charles E. Lemp of 143 White Oak Terrace, announce the engagement of their daughter, Miss Barbara Lemp, to Robert A. Pastore, son of Mr. and Mrs. Patrick N. Pastore of 87 Berkeley Avenue.

The couple are graduates of Belleville High School. Miss Lemp is presently a Senior at Upsala College. Her fiancé, a graduate also of Cornell University, and a member of Alpha Chi Rho fraternity, is a second year medical student at Georgetown University Medical School.

A June wedding is planned.

## Book Review Will Highlight Hadassah Session

Rabbi Hyman Danzig, spiritual leader of Temple B'nai Israel, Nutley, will review the book, "Why I Am a Jew" by Dr. David de Soia Pool, at a meeting of Belleville-Nutley Chapter of Hadassah Tuesday evening, Jan. 23, at the Temple.

The book is one of a series on the various major religions throughout the world. Rabbi Danzig will give an analysis of the history and origin of the various phases of Judaism. There will be a question and answer period following his review.

Mrs. Louis Sussman, chapter education chairman, will be in charge. Mrs. Ben Kur of Nutley is Chapter president.

## Ammanio To Represent County At VFW Meeting

Commander David Ammanio of the Fourth District Veterans of Foreign Wars will represent Essex County at the state VFW quarterly meeting this Sunday at 10 a.m. in the War Memorial Building, Trenton.

Ammanio is a member and former post commander of Younger-Alden Post 275. He resides at 1 Essex Street.

District commanders represent each of the state's 21 counties and together with the elected state VFW officers, are entitled to vote on the varied issues that arise each quarterly session. The meetings are officially referred to as the Council of Administration Meetings.

## Rec. Dept. Has Openings In Pre-School Program

There are still a few openings in the Recreation Department Pre-School Play Program. Any Belleville child who is eligible for kindergarten in the Fall qualifies for the program, which consists of handicrafts, games, songs, art, stories, outside play, short rest periods and occasional parties on holidays.

The play program is designed to introduce children to group play and produce a pleasant social adjustment for their first years at school. The mothers of the children take an active part in the program. They serve duty days, which amount to about one morning out of every seven.



## WE TALK BABY TALK!

and you'll be reassured to know we do! For when it comes to your baby's feet, you want to entrust his shoes — and shoe fit — to an expert. We understand babies. We understand shoes. That's why we have such a wide selection of Edwards Toddlers for you to choose with confidence!



5.95  
Sizes 2 to 6  
B - EEE



Doctors' Prescriptions Filled  
**TANNEN'S**  
SHOE SHOP  
(JACK & JILL)  
141 Washington Avenue  
Belleville, N. J.  
PL. 8-6448  
Open Friday 'Til 9 P.M.



MRS. DAVID STEVENS  
Former Mary M. Hassan

## Mary Margaret Hassan Is Married At Nuptial Mass

The marriage of Miss Mary Margaret Hassan, daughter of Mrs. Anna Hassan of 237 William Street, and Edward Hassan of Van Houten Place, to David Martin Stevens, son of Mr. and Mrs. D. Stevens of 84 Romaine Avenue, Jersey City, was solemnized Saturday morning, Jan. 13, at 11 o'clock in a ceremony presiding a Nuptial Mass in St. Peter's Church.

The Rev. James Heavey performed the ceremony and celebrated the Mass. The reception followed at The Fountain, Belleville.

The bride, who was given in marriage by her brother, Edward D. Hassan, was gown in white delustered satin trimmed with fur, featuring long sleeves, fitted bodice and bouffant skirt terminating in a cathedral train.

Her headpiece of crystals and pearls trimmed with fur held her triple-tier elbow length veil of silk illusion and she carried a missal with white orchids and stephanotis.

Maid of honor for her sister was Miss Anne Hassan, and bridesmaids were Miss Patricia Hayes of Clifton, Miss Diane Stevens of Jersey City, sister of the bridegroom, and Miss Barbara Cregan of Newark.

The bridal attendants were gown in glen green peau de soie full length dresses. They had white fur hats and carried fur muffs with burnt orange talisman roses.

Joseph Stevens of Jersey City served as his cousin's best man,

and ushers were Leonard Corcoran of North Bergen, and Robert Kwitkowski and William Moran, cousin of the bridegroom, of Jersey City.

The mother of the bride was gown in beige cotton lace, and the bridegroom's mother chose blue lace and chiffon. Each had matching accessories and a corsage of white orchids.

A graduate of St. Joseph's Hospital School of Nursing, Paterson, the bride attended Seton Hall University, Newark. She is on the staff in the intensive care unit at St. Michael's Hospital, Newark.

Mr. Stevens was graduated from St. Peter's College, Jersey City, where he earned a B.S. degree in physics. He is with Sperry Gyroscope Co., Great Neck, L. I.

After a honeymoon in the Poconos, the couple will live in Quincey, Mass.

A fanatic is simply an individual who knows that he is right.

## Tri-Town Names Mrs. T. Marone Top "Member"

Mrs. Antonette "Toni" Marone of 89 Linden Avenue, Belleville was named "Member of the Month" at the December dinner meeting of the Tri-Town Business and Professional Women's Club of Belleville, Bloomfield and Nutley.

Mrs. Marone attended Nutley High School and has been a member of Tri-Town for three years, serving for one year as public relations chairman. She is a president of St. Mary's Rosary Society, Nutley, and second vice president of School 3, P.T.A., Belleville. She is also an active member of D.A.V.

Mrs. Marone is noted for her baking ability and is always in demand when a specially decorated cake is needed by her friends. She can also be found whenever a charitable organization is in the process of raising funds.

## Church Slates Annual Meeting Of Congregation

The annual meeting of the congregation of Montgomery Presbyterian Church, will be held Friday, Jan. 19, following a covered dish supper. In keeping with Presbyterian church policy, the congregation will meet first to hear the reports of all boards and organizations, to elect ruling elders and deacons to replace those whose terms of office have expired, and to act upon any other ecclesiastical business.

Immediately after the ecclesiastical meeting, the congregation will convene as a corporation to hear the report of the board of trustees, to elect members to fill expired terms on the board and to act upon any other necessary corporate business.

All communicant members of the church, in good standing are eligible to vote in these meetings. Members who will attend the supper are asked to bring a covered dish sufficient for their family. Rolls, dessert and beverage will be provided.

Life's puzzle: why is there such an oversupply of those ready to lead, even without a request?

## Clubwomen Hear Talk On "Our Military Obligation"

Sgt. Anthony Triano, of the Public Information Office of U.S. Army Recruiting, was guest speaker at a meeting of the Evening Membership Department of the Woman's Club of Belleville, last night at the clubhouse, 51 Rossmore Place. Sgt. Triano spoke on "Our Military Obligation and Ways It May be Fulfilled."

Mrs. James J. Dunn was program chairman.

The annual "White Elephant Auction" was held, with Miss Lieselotte Goettler, literature

chairman, as auctioneer. She was assisted by Mrs. Dunn.

The Evening Department will have a bus trip to Patricia Murphy's Restaurant, on Saturday, Feb. 17. Members and guests will meet at the clubhouse at 5:30 p.m. Bus transportation tickets may be purchased from any member before Feb. 7.

## Betrothed



MISS BARBARA DE CAROLIS

Mr. and Mrs. Michael V. De Carolis of 211 Riverside Drive, Belleville, announce the engagement of their daughter, Miss Barbara Joan De Carolis, to Frank V. Tasselli, son of Mr. and Mrs. Nicholas Tasselli of 9 Columbus Avenue, Belleville.

Miss De Carolis is a graduate of Morris Hills Regional High School, and is employed by the Trust Company of Morris County, Morristown. Mr. Tasselli, a graduate of Our Lady of Good Counsel High School, Newark, is proprietor of Acre Lounge, Inc., Belleville.

The man who loafs at his work doesn't need a vacation.

## Wm. J. Maddams Heads Realtors

William J. Maddams of Nutley was installed as president of the Board of Realtors of Bloomfield, Glen Ridge, Nutley and Belleville, Tuesday evening, Jan. 16, at For Hills Restaurant, Newark.

Vice presidents seated were Joseph T. Baumgardner, Bloomfield; Mrs. Kathryn A. Russell, Glen Ridge; Andrew E. Bloxson, Nutley, and Joseph W. Kane, Belleville; also Eugene Reilly, secretary; James A. Delisio, treasurer; Russell G. Marsters, Pat Meola and Norman Thompson, members at large, and Howell S. Cogan, delegate.

## Amato Conducts Opera Workshop

Donald Gage, director of the Gage School of Music and Dramatic Arts, Upper Montclair, announced today that Mozart's "Così fan Tutte" has been chosen as the opera to be performed by the Opera Workshop at the school. Auditions will be held later this month. Mr. Gage said, with classes starting Friday evening, Feb. 2. The course will run for 10 weeks, ending in a public performance.

The course is being coached by Anthony Amato, one of the country's outstanding opera directors. Mr. Amato has been presenting Opera for many years and is currently putting on a series called "Opera in Brief" at Town Hall. He is an honorary professor at New York University where he gives similar courses.

### SCALA Hairdressers

FOR THE PARTY SEASON AHEAD

### A New Hair Do for You...

Budget Priced

9.95\*

Our fragrant permanent wave complete with shampoo, set and haircut.

\*Tinted hair slightly higher

Open Daily 9 A.M. - 6 P.M.  
Fri. 9 A.M. - 9 P.M.

Phone 759-5846

366 FRANKLIN AVE. BELLEVILLE

### DON'T HIDE YOUR BEAUTIFUL SKIN

Start The New Year Right  
Have Unwanted Hair Removed

NOW BY ELECTROLYSIS

Call For Appointment

PL 9-0343

### ELECTROLUX (R)

(Factory Branch)  
Authorized

CALL PL 3-8731

24 Hour 28 1/2 Belleville Ave.  
Service Bloomfield  
SALES SERVICE SUPPLIES

### Here's all you need to install an Armstrong Ceiling...

#### FURRING STRIPS

Top grade 1" x 3" lumber. You install these first over joists or cracked ceiling, staple or nail tiles to them.

#### FREE BOOKLET

Gives easy-to-follow instructions. With this illustrated booklet as a guide, anyone can install an Armstrong Ceiling. Shows how to plan, measure, cut, install and finish.

#### MOLDING

A variety of styles to cover joint where the ceiling tile meets the wall.

Top grade material

#### Use Our Stapling Guns FREE

For many people, it's easier to install ceilings by stapling, rather than nailing. With your purchase of an Armstrong Ceiling, we'll lend you a stapling gun.

#### TOOLS

HAMMERS  
CROSSCUT SAWS  
CARPENTERS LEVELS  
CARPENTERS RULE

#### Armstrong ACoustical CEMENT

If your plaster ceiling is sound, you can cement ceiling tiles and save bother of installing furring strips.

Coverage: 60-70 sq. ft. per gal.

### VIOLA BROS., Inc.

180 WASHINGTON AVE., NUTLEY

Complete Line Of Building Materials

CALL NO 7-7000

### Edwards

Doctors' Prescriptions Filled

### TANNEN'S

SHOE SHOP  
(JACK & JILL)  
141 Washington Avenue  
Belleville, N. J.  
PL. 8-6448  
Open Friday 'Til 9 P.M.

### Paul's Shoe Shops

153 Washington Ave. Belleville Center    570 Bloomfield Ave. Bloomfield Center

### DOCTORS PRESCRIPTIONS FILLED

AT YOUR SERVICE

We don't just sell Stride Rites, we fit them with patience, care, experience. And we watch the calendar, mail you a reminder every size-check time. We wouldn't dream of doing less. We'll always try to do more.

THE STRIDE RITE SHOE  
THE SHOE THAT UNDERSTANDS CHANGING



## SOCIAL AND CLUB NEWS OF COMMUNITY INTEREST

## Child Guidance Week Calls Attention To Clinic's Work

Mayor Isadore Padula issued a proclamation this week calling for the observance next week, Jan. 22 through 28, of "Child Guidance Week." The Mayor's proclamation calls renewed public attention to the work of the North Essex Child Guidance Clinic, a voluntary, non-profit service institution in which the four neighboring communities of Belleville, Nutley, Bloomfield and Glen Ridge are participating to provide emotionally disturbed children with psychiatric diagnosis and psychotherapeutic treatment.

Belleville citizens can take a particular pride in the accomplishments of the Child Guidance Clinic in the 3½ years of its existence, since the establishment of such a clinic was first proposed by the Belleville Women's Club, after it had been ascertained that the State of New Jersey was willing and had in fact adopted a law — to match the funds raised by each participating municipality for mental health services.

Subsequently, the Belleville Child Guidance Association and corresponding associations in the other three municipalities were founded, to sponsor the work of the clinic. Each of the four local associations is represented on the board of trustees of the North Essex Child Guidance Clinic by six members, two of them representing the municipality as such, the other four chosen from among the members of each respective local association.

Presently, Belleville is represented on the Clinic's board by Mrs. C. E. Ashe, appointed by Mayor Padula, J. J. Hewitt, head of the Municipal Welfare Department, and by Michael Rosamilia, Mrs. Elsie Albertine, Mrs. Richard Drake, and Mrs. Richard Shaffer.

Housed in the Clara Maass Hospital, the Clinic, under the direction of highly competent medical and psychiatric specialists, is providing treatment for any child under 16, who may be referred to the Clinic either by a physician, the school system, a clergyman, or any welfare agency of any of the four communities. In the pattern of emotional disturbances, frequently not merely the child but the parents, too, need psychotherapeutic help.

Mayor Padula's proclamation of Child Guidance Week closes down an appeal to Belleville citizens for continued support and interest in the Clinic and its important task of studying and

treating children with emotional and behavior problems. The best possible support that can be rendered by citizens is in joining the local Child Guidance Association as members. The Association is now preparing for its annual meeting in March, when a full report of the Clinic's activities during the last budget-year will be made public. The meeting will be open to the public. Its exact time and place will be published in due time, to permit interested citizens to attend. Meanwhile, any of the above-mentioned trustees may be contacted for additional information.

## Plans Bridal



MISS GAY FARAGALLI

Mr. and Mrs. Frank Faragalli of 81 Boulevard Drive, Freehold, announce the engagement of their daughter, Miss Gay Faragalli, to Louis Michael Long, Jr., son of Mr. and Mrs. Louis M. Long of 29 Celia Terrace, Belleville.

Miss Faragalli was graduated from Freehold Regional High School, and Mr. Long is a Belleville High School graduate. Both are students at Bloomfield College, where the bride-elect is a Junior and her fiancé a Senior. He is president of his class. Both plan to teach Social Studies in Secondary Schools.

## PRE-SCHOOL CLASS

Applications are being accepted now by the Recreation Department for admission to the Pre-School Class for four-year-olds, which meets weekday mornings.

## Chinese Auction Will Benefit Deborah Chapter

Plans are underway for a Chinese auction for the benefit of the Belleville Chapter of Deborah to be held Wednesday evening, Feb. 14, at Biase's Restaurant, Newark. The chapter, which now boasts 100 members, aids the Deborah Hospital in Browns Mills, N. J., a non-sectarian hospital providing free heart and chest surgery and caring for tuberculosis patients.

Mrs. Pauline Yankowski is auction chairman, assisted by Miss Marie Serricella, co-chairman. Mrs. Ann Parrillo, Miss Elsie Travassano, Mrs. Eleanor Aloisano, Mrs. Pat Johnston, Mrs. Lillian Marino, Mrs. Mary DiNoria, Miss Geraldine Scitellia, Mrs. Elvira Tavina, Mrs. Nancy Colella, Mrs. Dorothy Shannon, Mrs. Carmela Bray, Mrs. Stephen O'Connor is chapter president.

## 'Chai' Luncheon For Torah Fund Slated For March

Mrs. Gerrard Berman of Paterson, president of the Northern New Jersey Branch of National Women's League of the United Synagogue of America, has announced the appointment of Mrs. George Bockstein of Maplewood as chairman of the 'Chai' luncheon to be sponsored by the Northern New Jersey Branch of Women's League on behalf of the Torah Fund, March 8 at The Goldman, West Orange.

The fund is used for the training of rabbis, teachers and lay leaders at the Jewish Theological Seminary of America in New York City and helps maintain the Seminary's Nationwide Interfaith programs, and its West Coast Branch, The University of Judaism, Mrs. George Sosin of Belleville is publicity chairman for the luncheon.

## Ideal Court Plans Master Mason's Night

Ideal Court, Order of the Amaranth, will observe Master Mason's Night and reception for Grand Officers Friday, Jan. 26, at Masonic Temple, 126 Joralemon Street, Belleville.

MRS. VICTOR ALBAGLI  
Former Maureen Bellis

## Mr., Mrs. Victor Albagli Honeymoon In The Poconos

Miss Maureen Bellis, daughter of Mr. and Mrs. John Bellis of 25 Fairway Avenue, and Victor Albagli, son of Mr. and Mrs. Victor J. Albagli of 21 Ligham Street, were united in marriage in a ceremony preceding a Nuptial Mass Saturday morning, Jan. 13, at 10 o'clock in St. Peter's Church.

The Rev. James F. Heavey officiated, and was the celebrant of the Mass. A reception followed at The Fiesta, Woodbridge.

Mr. Bellis gave his daughter in marriage. Her pure silk gown was fashioned with scoop neckline, long sleeves and bell-shaped skirt ending in a chapel train. Her double-tiered fingertip veil fell from a crown of orange blossoms, and she carried white roses with stephanotis.

Miss Barbara Bellis acted as her sister's maid of honor, and bridesmaids were Miss Ann Caffero of Jersey City, Miss Carol Collins of East Orange and Miss Joanne Marinaro of Belleville. The honor attendant wore an emerald green silk faille princess style dress with bell-shaped skirt. She had a matching veil band hat with a veil. The bridesmaids were similarly attired in pumpkin.

Ray Ventura of Belleville served as Mr. Albagli's best man and ushers were Allen Coogen of East Orange; Walter King, Bloomfield, and Edward Tobias, Wallington. The mother of the bride wore a green pure silk, and the bridegroom's mother chose a blue silk sheath. Mrs. Bellis' corsage was of white roses and Mrs. Albagli's of white orchids. The bride was graduated from

## Jr. Red Cross Sees Slides Of Japan, Egypt

Members of the Junior Red Cross of School 8 played host to Junior Red Cross representatives from the Belleville Schools Wednesday afternoon, Jan. 10. They viewed exhibits from 19 countries and saw colored slides of Japan, Hong Kong and Egypt.

Mrs. Hilda Saerman, chairman of Junior Red Cross for the Belleville Chapter had arranged to have Miss Kathryn Conkko of School 8 show some of the slides and exhibits from her trip "Around the World." Miss Conkko chose Japan, Hong Kong and Egypt for the group.

Miss Julia Pepe, Council chairman, conducted a short business meeting. She reported the Junior Red Cross enrollment was complete, and all schools had participated, with \$38 more collected this year for Junior Red Cross projects and community services.

She also reported all the schools had participated in making Christmas gifts for patients at Essex County Hospital, and High School students had second-hand toys for the Children's Shelter.

## Mission School Opens Jan. 21 At Wesley

A church-wide mission school will be conducted at Wesley Methodist Church beginning Sunday, Jan. 21, and continuing through Feb. 11. The theme of study will be "Churches for New Times."

The adult study to be based on the book, "Edge of the Edge" by Theodore E. Matson. Through case histories of old and new churches, it discusses the kind of church needed and the responsibility of the church laity in planning for the future.

There will be classes for all ages from nursery through adults, from 4 to 5:30 p.m., with a supper to be served by the Women's Society.

## Religious School Issues New Type Report Card

Dr. Seymour Fischer, chairman of the Board of Education of Congregation Ahavath Achim, Belleville, has announced the issuance of a new type of report card. The report, developed by Rabbi Victor Cohen, spiritual leader of the Congregation and principal of the Religious School, itemizes each subject and comments are written by the teacher.

Instead of the regular marks usually given, the teacher "discusses" the development of the child in each subject area. "This report has been well received by our parents and has brought school and home closer together," Dr. Fischer commented.

Approximately 1,000,000 tree seedlings are grown each year and sold at minimum cost to New Jersey landowners to promote reforestation. The trees are raised at the Department of Conservation and Economic Development's nursery at Washington Crossing State Park.

## Mental Health Forum On "Severely Disturbed Child"

The Mental Health Association of Essex County will present the first of a series of three meetings on the severely disturbed child, Tuesday evening, Jan. 22, at 8:15 o'clock in the auditorium of the Social Agencies Building, 60 South Fullerton Avenue, Montclair. The keynote speaker will be Dr. David Abel of Montclair, instructor of child psychiatry at Seton Hall College of Medicine and member of the staff of the Montclair Guidance Clinic, who will discuss "The Severely Disturbed Child: Problems and Prospects."

Organized group discussions will follow Dr. Abel's presentation which will include: the disturbed child of pre-school age, led by Dr. Ralph Shapiro; the disturbed child of elementary school age, Mrs. Gloria Seiner, the disturbed child in adolescence, Dr. Malcolm Marks, and the community residential center, Dr. Clyde Keutter.

A session exclusively for those engaged in the mental health professions with Dr. Alvin Friedman in charge, will be concerned with current professional practices with the severely disturbed child.

Mrs. Stanley Yorton, of Nutley, chairman of the sub-committee on services for severely emotionally disturbed children which has arranged the program, has announced that these meetings are open to all interested lay and professional persons. The need for understanding the nature and scope of the problem, exploration of the resources in the community, the expansion and establishment of facilities have long been recognized, she said.

## To Wed



MISS MARIE COCOZZA

Announcement is made of the engagement of Miss Marie Cocozza, daughter of Mrs. James Cocozza of 18 Alva Street, to Ralph Cetrulo, Jr., son of Mr. and Mrs. Ralph Cetrulo of 32 Montgomery Place, Miss Cocozza is the daughter also of the late Mr. Cocozza.

The engaged couple are graduates of Belleville High School. The bride-elect is a secretary with Western Electric Co., Newark. Her fiancé is with Interchemical Corp., Newark, and attends Social Hall College, where he is majoring in accounting.

No date has been set for the wedding.

Local Students Take Part In CP Telethon

Miss Jeanette F. Betz of 66 Berkeley Avenue, and William E. Kant, 531 Pacific Avenue, were among more than 100 Union Junior College students who volunteered to serve at the New Jersey message center last weekend as part of the annual Cerebral Palsy Telethon.

The Cranford college students were stationed at the Park Hotel, Plainfield, to accept pledges to the United Cerebral Palsy Association of New Jersey.

TV personality Dennis James was master of ceremonies for the 18-hour Telethon. Singers Steve Lawrence and Eddie Goro were host and hostess. Miss Betz and Kant are Sophomores in the day session. They are majoring in business administration.

## Unwanted Hair

Removed Painlessly by

ELECTROLYSIS

JEAN BERBERET, 632 Mt. Prospect Ave., Newark

Over 10 Years Experience HU 5-4305

## Pro-tek-tiv

EXTRA SUPPORT SHOE

has these important features

LONG LEATHER COUNTERS

BROAD STEEL SHANK

ANATOMIC HEEL

INSIDE WEDGE IN HEEL

Also Regular Infant Shoes Priced 4.99 to 7.95

According to Size

Over 25 Years of Experience In Proper Shoe Fitting

MODERN TRED

SHOES

238 Franklin Ave. At The Center

NO 7-5431

Parking - Rear of Store

## ANNOUNCING OPENING STAR MILK BAR

(Under new management. Formerly Ideal Milk Bar)

Franklin Ave. & Joralemon St. Belleville

## FEATURING ALDERNEY ICE CREAM

32 Flavors — Alderney Milk Products



Delicious Sodas and Sundaes

Breakfast Served

Delicious

Hamburgers

Steaks - Hot Dogs

Greeting Cards

Candy

Bread

Open 7 A.M. to 11 P.M.

PL 9-1497

EYES EXAMINED

Dr. M. Roachvarg

OPTOMETRIST

BY APPOINTMENT

132 Washington Avenue  
Belleville

## Modernize Your Bathroom

Ashamed of your old fashioned bathroom? Let me design or remodel your present bathroom or kitchen to look like a showplace. I will renovate the job completely, including plumbing, carpentry, tile, etc.

## Easy Financing Arranged.

FREE ESTIMATES

DI GANGI TILE CO.

PL 9-4489

## LIGHTING can dramatize your home!

... and what a difference it makes. A few well chosen decorator lamps, spots, or properly installed valance lighting give your home a new look, without costly cash outlays for expensive new furniture, decorating or painting. Dramatic lighting brings your drapes and

walls to life, makes rooms appear larger, richer, more comfortable. Lighting does wonderful things for your home... use it!

A CERTIFIED RESIDENTIAL LIGHTING CONSULTANT CAN BE OF SERVICE IN HELPING YOU PLAN BETTER, MORE EFFECTIVE LIGHTING IN YOUR HOME. CALL YOUR LOCAL PUBLIC SERVICE OFFICE.

PUBLIC SERVICE ELECTRIC AND GAS COMPANY  
TAXPAYING SERVANT OF A GREAT STATE



# The Belleville Times

PAGE SIX

THURSDAY, JANUARY 11, 1962

## The School Board Election

Approximately two weeks have lapsed in the campaign of the 13 citizens vying for the three seats on the Board of Education to be voted upon on Tuesday, February 13th.

At this stage in the campaign it is clear few candidates are willing to come to grips with one of its major issues.

It is a matter of record that School Superintendent Dr. Frank Durkee received his appointment to the post by a 4-3 vote of the School Board. The dissenters were Ed Arvidson, Nicholas Juliano, and Richard Drake.

Leading the fight for the promotion of Dr. Durkee to the highest administrative position in our school system was School Board President Dominic Lally, himself an educator. Joining Lally in support of Dr. Durkee were Dr. Frank DiRuggiero, Michael Albertine and Arthur Pico.

Arvidson, Drake, and Juliano were elected to office with the sponsorship and support of a group of citizens variously calling themselves the Aroused Belleville Citizens and/or the Alert Belleville Citizens.

This group has entered a slate of three candidates in the present field to contest the seats presently held by Board President Dominic Lally, Dr. Frank DiRuggiero, and Michael Albertine.

His three candidates are Calvin Peck, John DiRienzo, and George Brown.

Alert or Aroused, these three citizens have failed to tell Belleville voters how their election will improve our school system. They have failed to tell the voters whether or not they favor the gag-rule which their club colleague, Nicholas Juliano, wishes to impose upon Dr. Frank Durkee.

Since Dr. Durkee's appointment, Arvidson and Juliano have made it crystal clear that they intend to obstruct his performance as school superintendent. They have already made unsuccessful efforts to curtail the authority and responsibility of School Superintendent Dr. Frank Durkee.

The only reason they met with failure was their inability to obtain a fourth vote on the present school board.

Should any one of the three ABC candidates win on February 13th a four-member faction would come into being which might undermine and downgrade the authority and responsibility of our School Superintendent Dr. Frank Durkee.

In the light of the foregoing, Peck, DiRienzo and Brown are under obligation to tell the voters where they stand with respect to Dr. Frank Durkee, his authority and responsibility.

Brown particularly, for it may be recalled that he rose to his feet at the public meeting of the School Board when Dr. Durkee received his appointment and publicly requested Dr. Durkee not to accept the appointment. In view of his past attitude can we assume that Brown, if elected, will give Dr. Durkee, a professional educator, the complete support a School Superintendent deserves? The people are entitled to know the answer.

Three candidates are being sponsored by the politically-oriented Tax Council. They are Mrs. Norma McCool, Paul Bernhardt, and Paul Francisco. The Tax Council has distinguished itself with respect to the Belleville School system in one way — its obstruction to educational progress. The Tax Council caused to be printed on numerous occasions lies, half-truths, and outright misrepresentations during the two new school campaigns.

McCool, Bernhardt, and Francisco are faced with a tremendous burden — rising above the negative reputation of the Citizens Tax Council with respect to our public education system. They should tell the voters whether or not — if elected — they would go to the Tax Council club house for instructions or will they make their school board decisions based upon what is best for our children?

The Tax Council has left no stone unturned in its persistent effort to harass our school board and its administrators. Much of the grief visited upon the late Evan Thomas emanated from irresponsible Tax Council charges.

During the new school campaign leaders of this group filed grave charges against the present school board, accusing it of promising jobs in the school system in exchange for voter support of the new school referendum. These were serious charges — involving malicious slander, libel, and the very integrity of our school system. What has happened to these charges conveniently filed during the heat of

a campaign? They were filed simply to discredit the School Board and to be withdrawn after Election Day?

To our knowledge, McCool, Bernhardt and Francisco had no part in the foregoing actions of the Tax Council and its spokesmen. However, they bear the burden of the Tax Council label by reason of their acceptance of the group's sponsorship. Hence, they must tell the voters if they subscribe to the campaign tactics of their sponsor — and whether or not as board members will they obstruct the work of School Superintendent Dr. Frank Durkee as he goes about his daily efforts to apply himself to the seemingly endless task of upgrading our school system.

Four candidates have endorsed the principle that the office of School Superintendent is and should be above and beyond the reach of politicians — be they school system politicians or city hall politicians. They are challenger Edward Wallock, Board President Dominic Lally, Michael Albertine, and Dr. Frank DiRuggiero. Challengers Ted DelGuercio, Ralph Risoli, and Albert Guglielmini Jr. have been silent on this issue.

Dr. DiRuggiero, Board President Lally, and Michael Albertine have a record that shows complete support and respect for School Superintendent Dr. Frank Durkee. There is no doubt about where they stand with respect to Dr. Durkee, his authority and responsibility.

The challengers are under obligation to inform the voters with respect to their individual attitudes toward Dr. Durkee and his position of School Superintendent. After all is said and done Belleville taxpayers are paying Dr. Durkee approximately \$18,000 to operate our school system. If a new school board majority wants to take over control and supervision of our school system why have a superintendent in the first place?

Some Belleville citizens think the reputation of our local public school system couldn't be any worse than it was before the citizens voted to build a new high school. They are sadly mistaken. Should the office of School Superintendent become a pawn in the hands of power-drunk politician members of the School Board approximately 5500 children will suffer irreparable harm. This must not and should not happen in Belleville.

In our judgment Dr. Frank Durkee is an outstanding educator. He has served our community well. He is an educator in a hurry. He suffers from a fatigue not experienced by all top-flight leaders struggling to solve problems evading the best efforts of the past generation.

The world in which we live today is so complex — so fast moving — that it will take all of our combined energies and imagination to stay abreast of the times, especially in the field of education.

Belleville voters would be well advised to vote for school board candidates who are pledged to work with — not against — our outstanding School Superintendent Dr. Frank Durkee.

## Mrs. Violet Rochau Supported Lally

In this column last week we commented upon some of the contributions made by School Board President Dominic Lally during his three year tenure which expires February 13th. Lally is a candidate to succeed himself.

In one editorial passage we made the following observation, "Two years ago Lally put on a one-man campaign against the proposal of the Rochau — led majority bent upon spending well over \$18,000 on alterations which Lally insisted could be performed for much less."

The above reference related to alterations deemed necessary to the Clearman Field field house. Architectural estimates for the alterations to be made by independent contractors were in the neighborhood of \$18,000. Protesting the recommendation that an outside contractor be engaged to perform the alterations, Lally, presently a math teacher with many years of experience in the construction field demanded he be given the opportunity to organize and supervise the job by utilizing summer time services of maintenance employees of the school board, already on the public pay-roll.

Shortly after Mrs. Rochau became president of the School Board in February 1960, she consented to appoint Lally a committee of one to undertake the job of making the field house alterations. As a result Lally was able to have the work performed for approximately \$8,000, thus saving Belleville taxpayers about \$10,000.

Last week's reference to the "Rochau-led majority" might logically lead readers to assume that Mrs. Rochau opposed Lally on this project. The reference was intended to describe her status as Board President. To remove any misunderstanding or misinterpretation, the record should leave no doubt that Mrs. Rochau, upon becoming President of the School Board, supported Lally's proposal regarding the Clearman Field field house.

## Candidates

(Continued From Page 1)

Dr. DiRuggiero had a prepared statement read for him by James Leary. In it he slammed "Johnny-come-latties" who were offering their ideas too late for any plans to be altered. He insisted the board had acted for a new school consulting with educational specialists and merely by listening to "crackpot ideas."

Lally had sent a message to the school to be read, but it was not received by the P.T.A. president, Mrs. Harry M. Burbank.

Michael Albertine, the third incumbent seeking re-election, left the board meeting early to speak at School Five. He stressed experience and the warning "not to change horses in mid-stream."

Pointing to improvements made at School Five, he added, "This Board of Education hasn't been sitting by and having coffee clutches."

Del Guercio, formerly a professional baseball player, hoped for a "rebirth of the sports program" in Belleville. "The desire to participate in sports is not there now," he said.

## Albertine

(Continued From Page 1)

through analysis of a problem. This course can only be maintained when a member of the Board of Education owes his election to the people's response to his candidacy, not to any group, organization or individual. He is therefore free of any obligation other than to serve the best interests of our children and those of the taxpayer.

"I have always attempted to maintain the stability of our school system and the morale of our educators. My guide has been the greatest good for the greatest number. This fair and impartial viewpoint is of personal importance to me since my children attend the public school."

"I ask for your support in order to continue this open-minded, impartial consideration of all issues confronting the Board of Education."

## Dickson

(Continued From Page 1)

eral manager of Kilde's Aerospace Division. Dickson has been active in promoting advanced management techniques. In recent years he served as president of the Bel Air Club and as president of the Bel Air Institute of America.

## Lally

(Continued From Page 1)

read by James Leary. Albertine arrived late and delivered his remarks personally. He left the board meeting early.

Lally's statement said: "The problems of public education concern all of us, and it is time for all of us to do something about them."

"I believe that the people are responsible for the schools, that

LEGAL NOTICE

Chapter No. 1008  
Revised District No. 2  
REPORT OF CONDITION OF THE  
PROPERTY OF BANK A TRUST  
COMPANY OF BELLEVILLE, IN THE  
COUNTY OF JEFFERSON, MISSOURI,  
CLOSE OF BUSINESS ON DECEMBER  
31, 1961, PUBLISHED BY COMPTROLLER OF  
THE CURRENCY, UNDER SECTION  
5512 OF THE REVENUE STATUTES.

ASSETS  
Cash, balances with other banks, and cash items in process of collection \$ 2,796,532.29  
U.S. Government securities, direct and indirect 7,357,218.28  
Obligations of States and political subdivisions 2,994,151.78  
U.S. Government bonds, including \$10,500,000 of Federal Reserve bank 37,900.00  
Loans and discounts in process 5,843,954.54  
Total assets 21,793,999.49

LIABILITIES  
Demand deposits, individual, partnerships, and corporations 8,253,616.29  
Time and savings deposits of individuals, partnerships, and corporations 9,909,650.74  
Deposits of United States Government, including postal savings 508,674.87  
Deposits of States and political subdivisions 958,989.48  
Certified and official checks, etc. 301,807.94  
Total liabilities 20,323,660.38

Capital Stock  
(a) Common stock, total par \$22,000.00  
Paid in excess of par \$18,000.00, distributable to preferred stock 120,000.00  
Surplus 1,120,000.00  
Undivided profits 81,544.11  
Reserve and retirement account for preferred stock 132,700.00  
Total capital 1,470,334.11

TOTAL LIABILITIES AND CAPITAL ACCOUNTS 21,793,999.49

MEMORANDA  
Assets pledged assigned to secure liabilities and for other purposes 78,000.00  
Frank J. Rolin, Cashier of the above-named bank do hereby declare that the contents of this report of condition are true and correct to the best of my knowledge and belief.

FRANK J. ROLIN  
We, the undersigned directors attest the correctness of this report of condition and declare that it has been examined by us and is to the best of our knowledge and belief true and correct.

B. THOMAS AITKEN  
RAY D. PULST  
ALBERT P. LUSCOMBE  
Directors

Feb. 1962

the quality of education in any community is in direct proportion to the informed, intelligent and active support of the schools by the people of that community. It is my purpose to encourage and unify such support.

"Any kind of an organization must have qualified leaders. Leaders who sincerely believe in their program. I have studied and know the needs of our educational program. I have been and still am a staunch supporter of our expansion program."

"My industrial experience, my experience as a board member and president at such a critical period will be valuable in helping me to administer this program with economy and prudence."

"As a dedicated educator, I am seeking re-election to the Board of Education to continue to serve our community."

"My reward is the wholesome feeling that I am helping in some measure our future citizens of Belleville."

## Di Ruggiero

(Continued From Page 1)

are beginning to shake off the 'rust of time' and to move forward."

"It has been my privilege in two terms on the Board of Education to share in helping Belleville schools to take steps for progress. With the passage of the school referendum, Dec. 21, 1961, the foundation was laid for Belleville Senior High School at the stadium site and a K-6-3 plan of school organization. Our first new school in 32 years will make possible not only a senior high school but the grouping of grades 7-9 in one building, the present high school building, and the use of the vacated rooms in the elementary schools for enrichment of the whole K-6 program."

"The obstructionists, and there are some running in the Board of Education election, do not accept, even now, the program for improvement in our schools. They still raise the silly argument of 'juvenile delinquency' when they talk about a junior high school. They seem to forget that almost always behind every juvenile delinquent, irrespective of the school system, is a delinquent parent. They ignore the fact that grouping grades 7-9 together in one school in Belleville is the best solution to giving these grades the kind of education they need at the lowest possible cost. Teenage youngsters belong together, not scattered among the infants and children of the lower grades. They need the opportunities of many clubs sports, vocational and educational guidance, ability grouping for better instruction, and the quality of teachers specialized in each subject field. They need a curriculum that will afford them the choice of foreign language instruction, advanced mathematics and science, better training in English composition, typewriting, more geography and history, mechanical drawing, shop, home economics, a real physical education program, real library experiences — a richer curriculum."

"Psychologists and guidance counselors tell us that parents are inclined to prolong the infancy and dependence of children, much to their detriment in becoming independent and capable citizens. Children can be better prepared in a junior high school for senior high school. They will graduate from senior high school more mature and more educated for college and the business world. All the obstructionists need do is to visit either of the two fine junior high schools in Bloomfield and compare what children in grades 7-8 there are doing with what they are doing in any of the present Belleville elementary schools. Any fair-minded person will be shocked at Belleville's need."

"I ask the voters to return me to the Board of Education to help guarantee continued progress in the development of better schools in Belleville. A vote for me is a vote against the obstructionists."

## Beck's Column



When a customer buys a new TV set, almost inevitably the question is asked "Does this set need an antenna?" The answer is yes, every TV set needs some kind of an antenna. This may be just a piece of wire tacked in the cabinet or as on portable sets, a so-called "rabbit ear" antenna attached to the case with telescoping rods which can be adjusted; or the set may need an outside antenna or an installation in the attic. Some sort of antenna is necessary, because the antenna receives the signal.

It stands to reason that an antenna free and clear on the roof will pick up the strongest signal, away from electrical interference within the house and ignition interference from passing cars. The next best is an antenna in the attic, provided of course that the roof covering material is not metal. The lower one gets to the ground, the weaker the signal which we want to receive, and the greater the interference transmitted by the electrical system in the house. Oil burner motors and igniters, telephone dialing, start and stop of the refrigerator motor and all the other electrical gadgets have an effect on the reception. If you are in a good location and adept at trying to find the best location of the rods on an inside antenna, you may still get good reception. However, if you live at a low point on Bloomfield Ave., in Nutley for instance with a ridge in front and a ridge in back, conditions are decidedly unfavorable. Still you may find one or two stations coming in fairly well. If you live on top on Ridge Road, conditions are entirely different and you have good reason to expect good reception on several stations with an indoor antenna. It all depends solely on the location, not on the set.

We service what we sell.

BECK'S RADIO TV  
HI FI ORGANS

Nutley North 7-2375

EAST NUTLEY GARAGE  
C. A. FANELLI Prop.  
Body and Fender Repairing  
Expert Auto Repairing  
Phone NO 7-6088  
33 Washington Avenue,  
Nutley, N. J.

some people think  
this is the year's  
best-looking grille...

some people think  
this is the  
best-looking rear...

Isn't it nice that you can get them both in one car? Wide-Track Pontiac

SEE YOUR PONTIAC DEALER FOR A WIDE CHOICE OF WIDE-TRACKS AND GOOD USED CARS, TOO

ARROWHEAD PONTIAC, INC.

645 Washington Ave.

Belleville, N. J.

EASTERN  
THEATRES  
ELWOOD  
642 B'way, Newark NJ 3-1222  
Now Thur Tues, Jan 23rd  
WINNER OF 4 ACADEMY AWARDS!  
SPARTAKUS  
2 Shows 1:30 & 8:00 P.M.  
Sat - Sun 1:30-5:00-8:40 P.M.  
New Push Back Seating  
Smoking Logs  
Free Lighted Parking

STARTS TOMORROW  
PONTIAC CINEMA  
BRIGITTE BARDOT  
MAURICE CHEVALIER  
The truth  
My 7 Little Sins

CAPITOL  
107 W. LAMONT AVENUE  
BELLEVILLE  
Now Thur Tuesday  
Try Donahue  
Connie Stevens  
Dorothy McGuire  
"Susan Slade"  
— PLUS —  
Joanne Woodward  
Paul Newman  
Sydney Poller  
"Paris Blues"  
Sat. Matinee, Jan. 20 - 1 P.M.  
"13 GHOSTS"  
3 Stooges  
"HAVE ROCKET WILL TRAVEL"  
Starts Wed, Jan. 24  
"SPARTAKUS"

## CENTER

Bloomfield Center PL 8-2906-8

— NOW SHOWING —

Kirk Douglas - Jean Simmons  
Laurence Olivier - John Gavin  
Charles Laughton - T. Curtis  
WINNER OF 4 ACADEMY AWARDS!  
SPARTAKUS

FRANKLIN  
Nutley North 7-0100  
NOW PLAYING!  
NO ADVANCE IN PRICE  
WINNER OF 4 ACADEMY AWARDS  
"ONE OF THE YEAR'S BEST"  
SPARTAKUS  
A Burt Production  
A Universal International Release  
MONDAY THRU FRIDAY - EVENINGS AT 8:15  
SATURDAY AND SUNDAY - 1:30 - 5:00 - 8:30

STOP IN NOW!  
A Few 1961 Ramblers Left  
Fabulous Deals - Big Trades  
Huge Discounts!  
NO 7-2233  
SCHIFTER - RAMBLER, Inc.  
89 WASHINGTON AVE.  
NUTLEY

"THERE 'n' BACK"  
SAVE TIME - SAVE MONEY!  
NO NUISANCE OF CHANGING!  
TO NEW YORK  
De CAMP BUS LINES  
Direct to the Center of New York - For Timetable Call 1-838

De CAMP BUS LINES

Direct to the Center of New York - For Timetable Call 1-838



# Belleville Drops To Nutley 51-47 After Overtime Play

**By ROGER WARTELL**—The first period, Bloomfield managed to gain a three point advantage at halftime. Trailing 20-23, the Bellboys missed their first six shots and the Bengals ran off eight straight points to take a commanding 34-23 lead. Belleville tried desperately to get back into the game by putting on a press, but this resulted in Bloomfield lengthening its lead.

**NUTLEY RIVALS**—Running up against their friendly rival, Nutley, the Bellboys found themselves in the same situation which has occurred four times this season. Belleville's quiet play ended well against Bloomfield, but was unable to hit in the second half. After a nip and tuck battle in

the first quarter, Bloomfield managed to build up a 17-5 lead in the first quarter, was gradually reduced as the game progressed. Led by the shooting of Bob Byers and Richie Luzzi, the Blue and Gold ran off 11 points to Nutley's one in the opening minutes. The Maroon Raiders came back in the second period though and cut Belleville's lead to 26-20. From here the contest was close with four points being the most that separated both squads. Belleville tied the score at 43 all and had a chance to win with 14 seconds left. After missing the shot, Nutley also had a chance to go ahead, but with Hawkins' miss the contest went into overtime. The Maroon Raiders jumped into an early four point lead, but Bob Byers' jump

## Five-Way Tie; No Last Place In Boys League

All three top teams won all five of their games last week in the Recreation-Kiwanis Jr. Bowling Boys League at Branch Brook Lanes. This put the standings this way: Joe D. Auto Repair is three games in front with a 21-6 standing. DeBacco Bros. and Pariso Bros. remain in a tie for second with 18-9 standings and all of the remaining teams are tied with 17-10 records.

Mike Resciniti of the Johnnie's Oil Service team made a nearly impossible 6-10 split in a tense game.

TEAM STANDINGS		W	L
Joe D. Auto Repair		21	6
DeBacco Bros.		18	9
Pariso Bros.		18	9
Vincent Strumolo Assn.		10	17
Johnnie's Oil Service		10	17
Belle Maid		10	17
All Sports Emblems		10	17
Knights of Columbus		10	17

# Frosh Lose To East Orange; Bounce Back To Beat Nutley

**BY RAY FERSKO**—A last minute rally failed to stop a strong East Orange team last Tuesday night when the Frosh lost by one basket. The blue and red dominated right from the start by scoring nine

points a quarter to the Bellboys. A frantic last minute effort by Ray, Megaro and Oese; was not enough to combat the strong East Orange opposition. The game closed with Belleville trailing, 37-29.

The following Friday the team went against a strong Nutley Squad and overpowered them with a 52-42 score. The game was close all the way until the last period when Jim Megaro and Frank Ray led a 16 point rally.

## Diane Basile's 139 Average And Andy Murnock's 160 Lead Saturday Jr. Keglers

Belleville Post 105 is holding on to the number one position, snatched recently from Fantashions, in the Recreation-Kiwanis Jr. Bowling League, girls 9 and 10 division at Olympic Bowl. Their record is 27-4 wins and 8-2 losses. Diane Basile of Fantashions rolled high average 139 and high series 531 for the league. Barbara Matieus of the Pantry high game 218.

In the girls 12 noon division, The Belleville Times with 30-5 wins and 5-2 losses, are seven games ahead of the second place Colony Club. Susan Jeffers of the Belleville Times holds all the highs in this division: high average, 116; high series, 554; and high game 191.

TEAMS		W	L
Belleville Times		30-5	5-2
Colony Club		23-12	12-5
Padula Association		20	15
Kiwanis Association		17	19
Jannarones		16	20
Crescent Press		15	21
Kondreck		7	29
Pico Association		6	30

STANDINGS		W	L
Belleville Post 105		27-4	8-2
Fantashions		25	11
Muscara Music		24	12
Unico National		19	17
Jolly Cleaners		18	18
Branch Brook Lanes		17	19
Pantry		13-12	12-5

**ONE GAME APART**—In the 9 a.m. Boys division Columbia Bicycle and Ken Smith Association are tied for first place. Both have a record of 26 wins and 10 losses. Andy Murnock of Riverside Body rolled high average 160 and high game 219. Gordon Potis of Sullivan Association high series 560 for this division.

TEAMS		W	L
Columbia Bicycle		26	10
Ken Smith Association		26	10
Tiber Hardware		22	14
Henris Dinette		22	14
Louaies Mens Shop		20	16
Kiwanis Eagles		19	17
Sullivan Association		16	20
Belleville Rosery		11	25
DeCan Processing		10	26
Riverside Body		9	27

TEAMS		W	L
Rubin Brothers		27	9
Belleville Typewriter		25	11
Belleville-Nutley Auto		22	14
Ross Woodworking		20	16
Barbone-Mosco Post		19-14	14-14
Newark Light		19	17
DiBellas Mens Shop		17	19
Air Cooled Service		14	22
Heller and Sons		10	26
Jackies Corner Market		5-30	30-5

## King Takes Chets; Joyce High Scorer

A determined King A. C. defeated a powerful Chets 74-65 to gain a tie for first place in the senior recreation basketball league. Leading the scoring for King was Joyce with 22 and Benz with 17. High point men for the losers were Long and Giovannucci with 24 point each.

LEAGUE STANDINGS SENIORS		W	L
Chets		4	1
King		4	1
Dolphins		2	3
Bruins		0	5

The Bruins dropped their fifth straight of the season to the Dolphins 55 to 49. Apicella was high man for the Bruins with 15 points. Leading the Dolphins was Higgins with a league high for the night of 24 points.

TEAMS		W	L
Chargers		4	0
Lions		4	0
Jesters		3	1
Celts		1	3
Branch Brook		1	4
Vikings		1	4

In the intermediate league the Jesters defeated the Vikings 45-28. Lions defeated Branch Brook 56-30, and the Chargers took Chets 50-42. The Lions and Chargers remain undefeated so far, and hold identical records of 4-0. Both teams were scheduled for a game Wednesday and the winner will be a strong contender for seeding in the coming playoffs.

TEAMS		W	L
Jets		3	0
Jive Five		2	1
Silver Lake		2	1
Bears		2	1
Regents		1	2
Loopers		0	3
Birds		0	3

In the junior league the Jets bombed the Birds 50-16, the Bears dumped the Loopers 38-30, the Jive Five waltzed to a 32-27 win over the Turks, and Silver Lake defeated the Regents 36-11.

## Dolores Yanick Aids Slick Chicks Victories

The Slick Chicks, with their record of 36 wins and 18 losses keep first place in the Recreation Woman's Wednesday Night Bowling League. The Pin Pals, formerly top team, now with 33 wins and 21 losses, are in second place. No one has topped Dolores Yanick's high average of 149.16, high game 218, or high series 540. Dolores rolls with the Slick Chicks. The girls roll every Wednesday evening at nine at Branch Brook Lanes.

STANDINGS		W	L
Slick Chicks		36	18
Pin Pals		33	21
Straight Pins		30	24
Belles		26	28
Raiders		25	29
Nutty Squirrels		24	30
Sad Sacks		21	33
The Manor		21	33



FOURTH PERIOD TANGLE — David Hatch (14) fights for rebound with Steve Fritts (31). Fred Coselli (24) is in on the play.

## Freshmen Keep Up Winning Streak; Trip Kearny 31-29

**BY RAY FERSKO**

The Belleville freshman basketball team got its fourth victory when it trimmed Kearny 31-29. Out of five starts the team has lost only one and that to a tough Passaic team.

The team also beat St. Benedict's by a 34-32 margin. It was a hard, tough game for both teams but Belleville triumphed when George Budd drove down court and scored twice on side-line lay ups.

**KEARNY**

The Kearny game opened with Kearny taking the lead in the first half and Belleville playing hard but not gaining control. In the third quarter both teams scored five points. The fourth period opened with the Blue's Manay and Ray making beautiful downcourt drives. The whole team worked hard and won in the last seconds by two points. CLIFTON

The team's game against Clifton was a solid win, 32-23. Although the opening game was also a victory, this second game showed great improvement, particularly on defense.

The first quarter opened with both teams using a zone defense. Clifton was shooting from the outside while the Bellboys worked the ball in from the side. Belleville limited Clifton to six points this first quarter, while they scored 16, seven of which were made by Petrudi and another six on foul shots.

The second period started with Belleville's defense playing tighter and better. The Belleville offense was poor this quarter and

only scored three points, all of which were on foul shots. There was too much dribbling offensively and as a result Belleville suffered.

In the third quarter both teams played a tight defense. Clifton's offense pulled ahead slightly this period but Budd came back to widen the margin for Belleville. The first team came in to open the fourth quarter and brought things under control. Ray, Megaro and Renner successfully scored. Then Ehrenberg of Clif-

ton scored on a shot from the outside. Belleville retaliated with a foul shot by Megaro and a goal by Ray that brought the game to a successful end for the Blue and Gold.

The freshmen lost a fine coach, Eugene Westlake, who has accepted a position elsewhere. The new coach is Nick Petty, former assistant coach of the undefeated freshman football team. He has done a good job with the freshmen by coaching them through two victories so far.

WINTER'S COMING

**REAROF NOW!!**

**COURTNEY CONSTRUCTION CO.**

476 WASHINGTON AVE. BELLEVILLE, N. J.  
Office: Plymouth 1-2040 Home: PL 9-4504

**WE DO ROOFING WATERPROOFING LEADERS**

**GUTTERS**

**5 Day Free Trial... SMITH CORONA office machines**

Portables & Standards  
Electric — Manual  
Student Machines  
We Rebuild & Repair  
All Makes  
New & Used Typewriters & Adders • Cash Registers •

**Belleville Typewriter & Adding Machine Co.**  
105 Washington Ave. Belleville, N. J.  
**PL 1-0068**

## PARISO BROS. INC. FURNITURE \$50,000 STORE & WAREHOUSE

# Clearance

ENTIRE MONTH OF JANUARY

Dinnettes Starting At . . . . .	49.00
Bed Room 3 Pieces Starting At . . . . .	129.00
Sofas Starting At . . . . .	79.00
Arm Chairs Starting At . . . . .	69.00
Occasional Chairs Starting At . . . . .	39.00
Many Odd Beds 4'6" Size . . . . .	10.00
3 Piece Set For T.V. Room (3) . . . . .	49.95
T.V. Arm Chairs . . . . .	12.95
Lounger - Sleeper (foam) . . . . .	59.95
5 Piece T.V. Set Consisting Of . . . . .	109.00
2 Piece Sect. Cor. Table 2 Arm Chairs . . . . .	3.50
Hollywood Plastic Headboards . . . . .	7.50
Hollywood Metal Bed Frames . . . . .	6.95
Pole Lamps . . . . .	

## PARISO BROS., Inc.

Bedrooms - Living Rooms - Dining Rooms - Bedding & Carpeting

16 WASHINGTON AVE., BELLEVILLE — PL 9-2273

Open 'til 9 P.M. Mon., Wed., Fri. — Open 'til 6 P.M. Tues., Thurs. and Sat.



# Belleville Drops To Nutley 51-47 After Overtime Play

By ROGER WARTELL

Belleville High's basketball team extended its losing streak to eight games last week as the Belboys cagers lost to Bloomfield and Nutley. The Blue and Gold played Bloomfield at the opponent's court and were defeated by a score of 63-43. Against Nutley, Belleville lost in overtime 51-47. The Belboys will be the victims of a very strong East Orange squad tomorrow.

Belleville's quietest played well against Bloomfield, but was unable to hit in the second half. After a nip and tuck battle in

the first period, Bloomfield managed to gain a three point advantage at halftime. Trailing 26-23, the Belboys missed their first six shots and the Bengals ran off eight straight points to take a commanding 34-23 lead. Belleville tried desperately to get back into the game by putting on a press, but this resulted in Bloomfield lengthening its lead.

**NUTLEY RIVALS**  
Running up against their friendly rival Nutley, the Belboys found themselves in the same situation which has occurred four times this season. Belleville's

quietest built up a 17-5 lead in the first quarter, was gradually reduced as the game progressed. Led by the shooting of Bob Byers and Richie Luzzi, the Blue and Gold ran off 11 points to Nutley's one in the opening minutes. Hatch

The Maroon Raiders came back in the second period though and cut Belleville's lead to 28-20. From here the contest was close with four points being the most that separated both squads. Nutley Belleville tied the score at 43. All had a chance to win with 14 seconds left. After missing the shot, Nutley also had a Friesma chance to go ahead, but with Mease Hawkins' miss the contest went into overtime. The Maroon Raiders jumped into an early four point lead, but Bob Byers' jump

## Five-Way Tie; No Last Place In Boys League

All three top teams won all three of their games last week in the Recreation-Kiwanis Jr. Bowling Boys League at Branch Brook Lanes. This put the standings this way: Joe D. Auto Repair is three games in front with a 21-6 record. DeBacco Bros. and Pariso Bros. remain in a tie for second with 18-9 standings and all of the remaining teams are tied with 10-17 records.

Mike Resciniti of the Johnnie's Oil Service team made a nearly impossible 6-7-10 split in a tense game.

### TEAM STANDINGS

	W	L
Joe D. Auto Repair	21	6
DeBacco Brothers	18	9
Pariso Bros.	18	9
Vincent Strumolo Assn.	10	17
Johnnie's Oil Service	10	17
Belle Maid	10	17
All Sports Emblems	10	17
Knights of Columbus	10	17

### ONE GAME APART

In the Girls Division of the Recreation-Kiwanis Jr. Bowling the Corner Pharmacy moved to within one game of the league-leading Rose Reilly Agency and Savino's Sport Shop moved to within two games of the leaders. The first four teams in fact are each just one game apart.

TEAMS	W	L
Rose Reilly Agency	10	8
Corner Pharmacy	18	9
Savino's Sport Shop	17	10
Olympic Bowl	16	11
Dory's Beauty Salon	10	17
Boston Store	4	23

### Yackers Keep First Place By Two Games

The Yackers, with 30 wins and 18 losses, is the number one team in the Recreation Woman's Monday Night Bowling League. The Trailblazers and Alley Cats, tied for second place are just two games behind, both with 28 wins and 20 losses. Mary Ann Ciesla of the Alley Cats rolled high average for the league, 146. Ann Ciesla of the Alley Cats rolled high average 160 and high game 219. Gordon Potts of Sullivan Association high series 560 for this division.

TEAMS	W	L
Ken Smith Association	26	10
Belleville Typewriter	22	14
Tiber Hardware	22	14
Henris Dinette	22	14
Loulares Mens Shop	20	16
Kiwanis Eagles	19	17
Sullivan Association	16	20
Belleville Rosery	11	25
DeCan Processing	10	26
Riverside Body	9	27

## Frosh Lose To East Orange; Bounce Back To Beat Nutley

By RAY FERSKO

A last minute rally failed to stop a strong East Orange team last Tuesday night when the Frosh lost by one basket. The blue and red dominated right from the start by scoring nine

points a quarter to the Belboys. A frantic last minute effort by Ray, Megaro and Oese was not enough to combat the strong East Orange opposition. The game closed with Belleville trailing, 37-29.

The following Friday the team went against a strong Nutley Squad and overpowered them with a 52-42 score. The game was close all the way until the last period when Jim Megaro and Frank Ray led a 16 point rally.

The teams record to date is 5-2. Coach Petty said, "The team shows a lot of hustle and should finish with a good season. Although they lost to East Orange they played very well and came back with a skillful win over Nutley."

## Diane Basile's 139 Average And Andy Murnock's 160 Lead Saturday Jr. Keglers

Belleville Post 105 is holding on to the number one position, snatched recently from Fantashions, in the Recreation-Kiwanis Jr. Bowling League, girls 9 a.m. division at Olympic Bowl. Their record is 27-12 wins and 8-1/2 losses. Diane Basile of Fantashions rolled high average 139 and high series 531 for the league. Barbara Mateus of the Pantry high game 218.

TEAMS	W	L
Belleville Post 105	27 1/2	8 1/2
Fantashions	25	11
Muscaro Music	24	12
Unico National	19	17
July Cleaners	18	18
Branch Brook Lanes	17	19
Pantry	13 1/2	12 1/2

In the 9 a.m. Boys division Columbia Bicycle and Ken Smith Association are tied for first place. Both have a record of 26 wins and 10 losses. Andy Murnock of Riverside Body rolled high average 160 and high game 219. Gordon Potts of Sullivan Association high series 560 for this division.

TEAMS	W	L
Ken Smith Association	26	10
Belleville Typewriter	22	14
Tiber Hardware	22	14
Henris Dinette	22	14
Loulares Mens Shop	20	16
Kiwanis Eagles	19	17
Sullivan Association	16	20
Belleville Rosery	11	25
DeCan Processing	10	26
Riverside Body	9	27

In the girls 12 noon division. The Belleville Times holds all wins and 5 1/2 losses; are seven games ahead of the second place. The Belleville Times holds all the highs in this division: high average, 116; high series, 554; and high game 191.

TEAMS	W	L
Belleville Times	30 1/2	5 1/2
Colony Club	23 1/2	12 1/2
Padula Association	20	16
Kiwanis Association	17	19
Jannarones	16	20
Crescent Press	15	21
Kondreck	7	29
Pico Association	6	30

In the 12 noon boys division Ruben Brothers with 27 wins and 9 losses are in the top position. The second place Belleville Typewriter with 25 wins and 11 losses are two games behind. Bob Baumgarten of Belleville-Nutley Auto Glass rolled high average 136 for the league. Fred Cucolo of Ruben Brothers high game 187 and John Ardito of Barbone-Mosco Post high series 501.

TEAMS	W	L
Rubin Brothers	27	9
Belleville Typewriter	25	11
Belleville-Nutley Auto	22	14
Newark Light	19	17
Ross Woodworking	20	16
Barbone-Mosco Post	18 1/2	16 1/2
DeBellis Mens Shop	17	19
The Hazards	21	20
Air Cooled Service	14	22
Heller and Sons	10	26
Jackies Corner Market	5 1/2	30 1/2

## Debs Keep Number One Standing In League

The Debs with 35 1/2 wins and 13 1/2 losses are the number one team in the Recreation-Olympic Housewives Bowling League. Sonny's Three with 33 1/2 wins and 17 1/2 losses are only two games behind. The high in this league remain the same; no one has topped Terry Potemone's series of 557, Ann Gregorio's high game of 235, or Miriam H. Berkey's average of 159. These girls roll every Thursday afternoon at one at the Olympic Bowl.

TEAMS	W	L
The Debs	35 1/2	13 1/2
Sonny's Three	33 1/2	17 1/2
The Better Halves	33	18
Sociable Three	32 1/2	18 1/2
Fire Bugs	31 1/2	19 1/2
Sparkplugs	31	20
Beatiniks	28 1/2	22 1/2
The Three "A's"	28 1/2	22 1/2
Forget Me Knots	27 1/2	23 1/2
Hi-Lo's	25 1/2	25 1/2
Olympics	25	26
Pigeon-toes	24 1/2	26 1/2
The Hurricanes	24	27
Three Hearts	22 1/2	28 1/2
The Bells	22 1/2	28 1/2
The Three Belles	22	29
The Rockettes	21 1/2	29 1/2
The Three Queens	21	30
The Hazards	21	30
Beginners Luck	19	32
Lucky Three	18 1/2	32 1/2
Pioneers	17	34

## King Takes Chets; Joyce High Scorer

A determined King A. C. defeated a powerful Chets 74-63 to gain a tie for first place in the senior recreation basketball league. Leading the scoring for King was Joyce with 22 and Ben with 17. High point men for the losers were Long and Giovannucci with 24 point each.

The Bruins dropped their fifth straight of the season to the Dolphins 55 to 49. Apicella was high man for the Bruins with 15 points. Leading the Dolphins was Higgins with a league high for the night of 24 points.

In the intermediate league the Jesters defeated the Vikings 45-28. Lions defeated Branch Brook 56-30, and the Chargers took Chets 50-42. The Lions and Chargers remain undefeated so far and hold identical records of 4-0. Both teams were scheduled for a game Wednesday and the winner will be a strong contender for seeding in the coming playoffs.

In the junior league the Jets bombed the Birds 50-16; the Bears dumped the Loopers 38-10; the Jive Five waltzed to a 32-27 win over the Turks, and Silver Lake defeated the Regents 36-11.

### LEAGUE STANDINGS

#### SENIORS

TEAMS	W	L
Chets	4	1
King	4	1
Dolphins	2	3
Bruins	0	5

#### INTERMEDIATE

TEAMS	W	L
Chargers	4	0
Lions	4	0
Jesters	3	1
Celts	1	3
Chets	1	3
Branch Brook	1	4
Vikings	1	4

#### JUNIOR LEAGUE

TEAMS	W	L
Jets	3	0
Jive Five	2	1
Silver Lake	2	1
Turks	2	1
Bears	2	1
Regents	1	2
Loopers	0	3
Birds	0	3

## Dolores Yanicak Aids Slick Chicks Victories

The Slick Chicks, with their record of 36 wins and 18 losses keep first place in the Recreation Woman's Wednesday Night Bowling League. The Pin Pals, formerly top team, now with 33 wins and 21 losses, are in second place. No one has topped Dolores Yanicak's high average of 149.16, high game 218, or high series 540. Dolores rolls with the Slick Chicks. These girls roll every Wednesday evening at nine at Branch Brook Lanes.

TEAMS	W	L
Slick Chicks	36	18
Pin Pals	33	21
Straight Pins	30	24
Belles	26	28
Raiders	25	29
Nutty Squirrels	24	30
Sad Sacks	21	33
The Manor	21	33

tion scored on a shot from the outside. Belleville retaliated with a foul shot by Megaro and a goal by Ray, that brought the game to a successful end for the Blue and Gold.

The freshmen lost a fine coach, Eugene Westlake, who has accepted a position elsewhere. The new coach is Nick Petty, former assistant coach of the undefeated freshman football team. He has done a good job with the freshmen by coaching them through two victories so far.



FOURTH PERIOD TANGLE — David Hatch (14) fights for rebound with Steve Fritts (31). Fred Coselli (24) is in on the play.

## Freshmen Keep Up Winning Streak; Trip Kearny 31-29

By RAY FERSKO

The Belleville freshman basketball team got its fourth victory when it trimmed Kearny 31-29. Out of five starts the team has lost only one and that to a tough Passaic team.

The team also beat St. Benedict's by a 34-32 margin. It was a hard, tough game for both teams but Belleville triumphed when George Budd drove down court and scored twice on side-line lay ups.

**KEARNY**  
The Kearny game opened with Kearny taking the lead in the first half and Belleville playing hard but not gaining control.

In the third quarter both teams scored five points. The fourth period opened with the Blue's Marmay and Ray making beautiful downtown drives. The whole team worked hard and won in the last seconds by two points.

**CLIFTON**  
The team's game against Clifton was a solid win, 32-23. Although the opening game was also a victory, this second game showed great improvement, particularly on defense.

The first quarter opened with both teams using a zone defense. Clifton was shooting from the outside while the Belboys worked the ball in from the side. Belleville limited Clifton to six points this first quarter, while they scored 16, seven of which were made by Petrucini and another six on foul shots.

The second period started with Belleville's defense playing tighter and better. The Belleville offense was poor this quarter and



## COURTNEY CONSTRUCTION CO.

476 WASHINGTON AVE. BELLEVILLE, N. J.  
Office: Plymouth 1-2040 Home: PL 9-4504



Belleville Typewriter & Adding Machine Co.  
105 Washington Ave. Belleville, N. J.

## WE DO ROOFING

WATERPROOFING  
LEADERS  
GUTTERS

## SMITH CORONA office machines

Portables & Standards  
Electric — Manual  
Student Machines  
We Rebuild & Repair  
All Makes  
New & Used Typewriters & Adders • Cash Registers •

PL 1-0063

## PARISO BROS. INC. FURNITURE

\$50,000 STORE & WAREHOUSE

# Clearance

ENTIRE MONTH OF JANUARY

Dinnettes Starting At . . . . .	49.00
Bed Room 3 Pieces Starting At . . . . .	129.00
Sofas Starting At . . . . .	79.00
Arm Chairs Starting At . . . . .	69.00
Occasional Chairs Starting At . . . . .	39.00
Many Odd Beds 4'6" Size . . . . .	10.00
3 Piece Set For T.V. Room (3) . . . . .	49.95
T.V. Arm Chairs . . . . .	12.95
Lounger - Sleeper (foam) . . . . .	59.95
5 Piece T.V. Set Consisting Of . . . . .	109.00
2 Piece Sect. Cor. Table 2 Arm Chairs . . . . .	3.50
Hollywood Plastic Headboards . . . . .	7.50
Hollywood Metal Bed Frames . . . . .	6.95
Pole Lamps . . . . .	

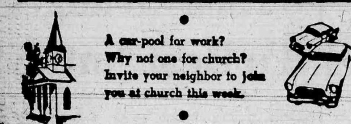
## PARISO BROS., Inc.

Bedrooms - Living Rooms - Dining Rooms - Bedding & Carpeting

16 WASHINGTON AVE., BELLEVILLE — PL 9-2273

Open 'til 9 P.M. Mon., Wed., Fri. — Open 'til 6 P.M. Tues., Thurs. and Sat.





## CHURCH LISTINGS

Church listings are corrected weekly according to copies sent to this newspaper by the churches. Deadline for this column is 12 noon Fridays. All changes have been included in the respective churches. This newspaper is not responsible for the accuracy of the schedules.

### Fewsmith Memorial Presbyterian Church

Union Avenue and Little Street  
George L. Van Leuven, Pastor

Friday — 7:15 to 7:45 p.m. Coffee and fellowship-hour for members of the congregation in the church social hall. At 8 o'clock, the annual meeting of the congregation and the civil corporation, also in the social hall.

Saturday — 8:30 p.m. The Couples Club Program. Slides and talk by Miss Kathryn Conklin, based on her overseas trip of last year.

Sunday — 9:30 and 11 a.m. Services of Morning Worship. Junior choir will sing at first service, and Chancel choir at second. The pastor will conduct both services. For the convenience of parents with small children, a childcare group will be conducted during the 11 o'clock hour. Church school is at 9:30, with a class for every age group. Junior High fellowship at 6:30, and Senior High at 7:30.

Monday — 3:30 p.m. Brownies and Girl Scouts.

Wednesday — 8 p.m. Third in series in mid-winter Bible study series, based on the "Essentials of the Christian Faith." Chancel choir practice will be conducted at the same hour.

### Montgomery Presbyterian Church

638 Mill Street  
Rev. Arthur Stevens, Pastor

Thursday — 3:45 p.m., Junior Choir rehearsal; 7 p.m., Youth Choir; 8:15 p.m., Adult Choir.

Friday — 6:30 p.m. Congregational Dinner; 7:30 Congregational Meeting — election of officers. 7:30 p.m., Girl Scout Troop Meeting.

Sunday — 9:30 and 11 a.m. Duplicate services of Divine Worship. Nursery is available for small children at 11; coffee is served between the services in Demarest Hall. Sunday Church School is held at 9:30 with classes for Nursery through Senior High. Men's Bible Class also meets at 9:30. Senior High Youth Fellowship meets at 7 p.m. The third in the series of four meetings on the meaning of church membership will be held at 8:30 p.m.

Wednesday — 10 a.m., Bible Study conducted by the pastor. The pastor is studying the Gospel according to Mark. Ample time is available for questions and discussion. The public is cordially invited.

The Board of Deacons will meet Wednesday at 8:30.

### Cong. Ahavath Achim

Belleville Jewish Center,  
125 Academy Street,  
Rabbi Victor Cohen

Friday — Candle lighting at 6:30 p.m. Services at 8:30 p.m. Lecture on Exodus 13:17-17:16 TV. Bishvava Host and Hostess at Oneg Shabbat. Mr. and Mrs. William Abramson in honor of Faye's recovery.

Saturday — Services at 9 a.m. Jr. Congregation at 10:15 a.m. Host and Hostess are Mr. and Mrs. George Suss in honor of Carol's birthday.

Sunday — Service at 8:30 a.m. Mishna at 10:30 a.m. Study Group at 8:30 p.m.

Wednesday — No teens at 7:30 p.m. Parents institute at 8:30 p.m.

Thursday — Teen group at 7:30 p.m.

### Little Zion, U.A.M.E.

154 Stephen Street  
Rev. Mary A. Farrar, Pastor

Sunday — 11 a.m. Worship Service.

### Christian Apostolic Church

77 Wallace Street  
Rev. Joseph Grinnelli, Pastor

Sunday — 9:45 a.m. Worship service in both English and Italian, and Sunday School.  
Tuesday — 7:30 p.m. Service in English.

### Belleville Assembly Of God

174-178 Holmes Street  
Rev. Anthony DiQuattro, Pastor

Sunday — 9:45 a.m. Sunday School; 10:45 a.m. Morning Worship.

### St. Peter's Church

159 William Street  
Rev. Reg. J. M. Kelly

Thursday — 6:30, 7:30 and 8 a.m. Mass; 7 p.m. High School Religion and CYO.

Friday — Masses at 6:30, 7:30 and 8 a.m.

Saturday — Masses at 6:30, 7:30 and 8 a.m.

Sunday — 6:30, 7:30, 8:30 and 9:30 a.m. Masses; 10:11 a.m. and 12 noon Masses on the church and 9:05 and 10:05 a.m. in the new auditorium. Benediction of Most Blessed Sacrament follows 11 o'clock Mass.

Sunday School follows 9 o'clock Children's Mass. 2 p.m. Sacrament of Baptism.

Monday — 6:30, 7:30, and 8 a.m. Mass.

Tuesday — 6:30, 7:30 and 8:30 a.m. Mass.

Wednesday — 6:30, 7:30 and 8 a.m. Mass.

### Silver Lake Baptist Church

166 Franklin Street  
Rev. B. Pascale, Pastor

Sunday — 10 a.m. Bible school for all ages. 11 a.m. Morning Worship Service. 4:30 p.m. Youth Service.

Wednesday — 7 p.m. High School Choir rehearsal.

Friday — 3:30 p.m. Junior Choir rehearsal. 8 p.m. Senior Choir rehearsal.

### Wesley Methodist Church

Washington Ave. at Academy St.  
Rev. Frank C. Shannon

Sunday — Sunday School all ages. 9:30 a.m.; 11 a.m., Worship Service, Nursery Care; 4 p.m. School of Missions; 6:30 p.m. Jr. M.Y.F.; 7:30 p.m. Sr. M.Y.F.

Monday — 7:30 p.m. Leadership Training Class.

Tuesday — 8 p.m. Commission on Education.

Wednesday — 7 p.m. Boy Scouts; 8 p.m. Chancel Choir.

Thursday — 4 p.m. Epworth Choir; 7 p.m. Wesley Choir; 8:30 p.m. A.A. Group.

Friday — 10 a.m. District Quiet Day — District Supt. Rev. Wallace G. Sorenson to speak. W.S.C.S. at Wesley will be hosts to the Eastern District of New York Conference.

### Bethany Church

(Evangelical Lutheran)  
Joyalemon and New Streets  
Rev. Robert L. Siegel, Pastor

Sunday — 9:30 a.m. Sunday School. 9:45 and 11 a.m. Worship Services; 7:30 p.m. Luther League.

### LEGAL NOTICE

ESTATE OF JACOB BLACKMAN, deceased. NOTICE OF SETTLEMENT. Notice is hereby given that the account of the subscriber, Executor of the Last Will and Testament of JACOB BLACKMAN, deceased, will be audited and stated by the Surrogate and reported for settlement to the Essex County Court, Probate Division, on Tuesday, the 23rd day of January next.

THE NATIONAL STATE BANK OF NEWARK dated: December 7, 1961. SMITH, KRAMER & MORRISON, Attorneys, 100 Broad Street, Newark 2, N. J. Fee: \$14.50.

### SURROGATE'S NOTICE

ESTATE OF MARGARET CARBERRY, deceased. NOTICE OF SETTLEMENT. Notice is hereby given that the account of the subscriber, Executor of the last will and testament of MARGARET CARBERRY, deceased, will be audited and stated by the Surrogate and reported for settlement to the Essex County Court, Probate Division, on Tuesday, the 23rd day of February next.

GEORGE LATIMER dated: January 4, 1962. Samuel Press, Attorney, 100 Market St., Newark 2, N. J. Fee: \$14.50.

### St. Anthony R. C.

58 Franklin Street  
Rev. Titian Manegus

Thursday — 7, 7:30 and 8 a.m. Mass. Wednesday — 7, 7:30 and 8 a.m. Mass.

Tuesday — 7, 7:30 and 8 a.m. Mass; 7:30 p.m. Devotions: Per

### FIDELITY UNION TRUST COMPANY

The Bank That's Strong for You! Member Federal Deposit Insurance Corporation

### Clean up your bills with a loan from

### FIDELITY UNION TRUST COMPANY

### The Bank That's Strong for You!

### Member Federal Deposit Insurance Corporation

### Social For Blind At Mount Carmel Center Sunday

The Mount Carmel Guild Center for the Blind will hold its monthly social at 92 Central Avenue, Newark, Sunday, Jan. 21, from 4 to 6 p.m. The social will feature a white elephant sale and auction to be conducted by Samuel Kahn, one of the blind members. Refreshments will be prepared and served by the members of the Rosary Society of St. John's Parish, Orange whose pastor, the Rev. Thomas K. Burke, will be host for the afternoon.

About 130 blind members and their guides are expected to attend. Miss Helen M. Reilly, Archdiocesan chairman of the blind department of the Mt. Carmel Guild, is in charge of arrangements. The Rev. Richard M. McGuinness, director of the Center will conduct a religious service at St. Patrick's Church for the blind members from 3:30 to 4 p.m.

Father McGuinness announced today that a course in nursing for blind members of the Guild will be given at the Center Monday evenings from 7:30 to 10 p.m. beginning Jan. 22. The course will be given by Mrs. Amelia Conney, R.N. of the Newark-Rad Cross staff, and will emphasize care for the sick at home. Braille thermometers and measuring devices will be used in the class.

Blind members of the Center will tour the Ashmole-Rose Brewery from 7 to 10 p.m. Thursday, Jan. 25. Father McGuinness, announced that transportation from the Center to the brewery and back to the Center will be furnished. Members will leave from the Center at 6:15 p.m.

### Brotherhood Breakfast At Temple B'nai Israel

A Brotherhood breakfast will be held at Temple B'nai Israel Sunday morning, Jan. 21, at 9:30 o'clock. The topic for discussion will be "A Look Ahead."

Samuel Convisor, director of Community Relations of the Greater Newark Development Council, will be guest speaker. He will discuss the urban renewal for the "New Newark," current plans and their impact on the suburbs.

Rabbi Hyman Danzig is spiritual leader of the temple. Herman G. Friedman is president of the Brotherhood.

### Congregation PTA Will See Film On Prejudice

A meeting of the Parent-Teacher Association of Congregation Ahavath Achim will be held this evening, Thursday, at 9 p.m. in the Temple's Sisterhood Hall.

Following a short business meeting, a film entitled "Can We Immunize Against Prejudice?" will be shown, with the narration by actor Eddie Albert. The audience participation discussion will be led by Rev. Dr. Frederick Long of Christ Episcopal Church, Belleville.

### WILLIAM V. IRVINE & SON

#### MEMORIAL HOME

For more than fifty years it has been our privilege to render personal service and offer friendly counsel to bereaved families. Our service is performed with dignity and is always within the reach of all.

276 Washington Ave. Belleville, N.J.  
Plymouth 9-1114  
William V. Irvine Jr., Director

### Central H.S. Class Of 1932 Plans Reunion

The 1932 graduating class of Central High School, Newark, will hold its 30th anniversary reunion at the Coronet, Irvington, on Sunday evening, May 6.

Abe Charnack of West Orange, is chairman and inquires of former classmates may be directed to the secretary of the committee, Elsie Nathan, of 17 Lincoln Avenue, West Orange.

### SURROGATE'S NOTICE

Dated: JANUARY 15, 1962. ESTATE OF EDITH M. BERRY, deceased. Pursuant to the order of DAVID H. WIENER, Surrogate of the County of Essex, this day made on the application of the undersigned, Executors of said deceased, notice is hereby given to the creditors of said deceased to exhibit to the undersigned, under oath or affirmation, their claims and demands against the estate of said deceased within six months from this date, or they will be forever barred from prosecuting or recovering the same against the subscriber(s).

LESLIE W. KINCH, HELEN ELLSWORTH CHOMBRÉ, KENNETH A. FINE, Attorneys, 7 Tappan Avenue, Belleville, N.J. Fee: \$20.00.

### LEGAL NOTICE

STATE OF NEW JERSEY DEPARTMENT OF STATE CERTIFICATE OF DISSOLUTION To all to whom these presents may come, Greeting.

WHEREAS, it appears to my satisfaction, by duly substantiated record of the proceedings for the voluntary dissolution thereof by the unanimous consent of all the stockholders, deposited to my office, that KIDDE PRECISION TOOL CORPORATION, a corporation of this State, whose principal office is situated at No. 35 Farland Street, in the Town of Bloomfield, County of Essex, State of New Jersey (D. W. Mack being the agent herein and in charge thereof), upon whom process may be served, has complied with the requirements of Title 14, Corporation, General, of Revised Statutes of New Jersey, preliminary to the issuing of this Certificate of Dissolution.

NOW THEREFORE, I, the Surrogate of State of the State of New Jersey, do hereby certify that the said corporation, did, on the Twenty-eighth day of December, 1961, file in my office a duly executed and attested consent in writing to the dissolution of said corporation, executed by all the stockholders thereof, which said consent and the record of the proceedings aforesaid are now on file in my said office as provided by law.

IN TESTIMONY WHEREOF, I have hereunto set my hand and official seal, at Trenton, New Jersey, this Twenty-eighth day of December A.D. one thousand nine hundred and sixty-one.

Fee: \$20.00

### SURROGATE'S NOTICE

ESTATE OF MICHAEL ANDREOTOLA, deceased. Dated: DECEMBER 12, 1961. Pursuant to the order of DAVID H. WIENER, Surrogate of the County of Essex, this day made on the application of the undersigned, Administrator of said deceased, notice is hereby given to the creditors of said deceased to exhibit to the undersigned, under oath or affirmation, their claims and demands against the estate of said deceased within six months from this date, or they will be forever barred from prosecuting or recovering the same against the subscriber(s).

KENNAN & FINCH, Attorneys, 7 Tappan Avenue, Belleville, N.J. Fee: \$10.00.

### WHEN DEATH OCCURS CALL

F. Douglas Wadsworth

WADSWORTH FUNERAL HOME

524 Union Avenue

Plymouth 9-2879

Belleville, N.J.

William V. Irvine Jr., Director

Belleville, N.J.

Belleville, N.J.

Belleville, N.J.

Belleville, N.J.

Belleville, N.J.

Belleville, N.J.

Belleville, N.J.

Belleville, N.J.

Belleville, N.J.

Belleville, N.J.

Belleville, N.J.

Belleville, N.J.

Belleville, N.J.

Belleville, N.J.

Belleville, N.J.

Belleville, N.J.

Belleville, N.J.

Belleville, N.J.

Belleville, N.J.

Belleville, N.J.

Belleville, N.J.

Belleville, N.J.

Belleville, N.J.

Belleville, N.J.

Belleville, N.J.

Belleville, N.J.

Belleville, N.J.

Belleville, N.J.

Belleville, N.J.

Belleville, N.J.

Belleville, N.J.

Belleville, N.J.

Belleville, N.J.

Belleville, N.J.

Belleville, N.J.

Belleville, N.J.

### WHEN DEATH OCCURS CALL

F. Douglas Wadsworth

WADSWORTH FUNERAL HOME

524 Union Avenue

Plymouth 9-2879

Belleville, N.J.

Belleville, N.J.

Belleville, N.J.

Belleville, N.J.

Belleville, N.J.

Belleville, N.J.

Belleville, N.J.

Belleville, N.J.

Belleville, N.J.

Belleville, N.J.

Belleville, N.J.

Belleville, N.J.

Belleville, N.J.

Belleville, N.J.

Belleville, N.J.

Belleville, N.J.

Belleville, N.J.

Belleville, N.J.

Belleville, N.J.

Belleville, N.J.

Belleville, N.J.

Belleville, N.J.

Belleville, N.J.

Belleville, N.J.

Belleville, N.J.

Belleville, N.J.

Belleville, N.J.

Belleville, N.J.

Belleville, N.J.

Belleville, N.J.

Belleville, N.J.

Belleville, N.J.

Belleville, N.J.

Belleville, N.J.

Belleville, N.J.

Belleville, N.J.

Belleville, N.J.

Belleville, N.J.

Belleville, N.J.

Belleville, N.J.

Belleville, N.J.

Belleville, N.J.

**BLASTING OFF NOW!**

**FORD DEALERS A-1 USED CAR**

**SPACE MAKER SALE!**

**SAVE ON DEPRECIATION  
SAVE ON TAXES  
SAVE ON INSURANCE**

*This is a dirtenslurper*

**Buy years of useful mileage... dependable transportation you can be proud of**

**Get a used car you can trust from a dealer who's in business to stay**

**Including many Used Cars... inspected, reconditioned when necessary, road-tested**

**Because of the great success of our new Fords, we've taken hundreds of cars in trade. The widest variety in years is available for you to choose from right now! All makes and models... all at down-to-earth prices... all backed up by your reliable Ford Dealer! Hurry in for widest choice.**

**GEORGE H. MEAD, INC.**

**515 Washington Ave. Belleville N. J.**



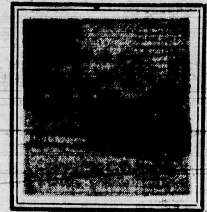
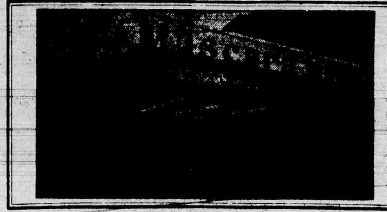
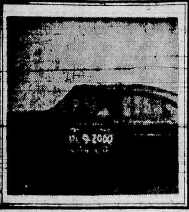
Belleville Cab  
PL 9-2000

Royal Shop-Rite  
150 Washington Ave.

Tannen's Shoe Shop  
141 Washington Ave.

Muscara Music Co.  
214 Washington Ave.

Jannarone's Shell Station  
243 Washington Ave.



1

2

3

4

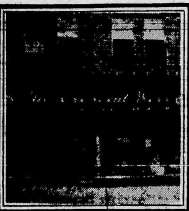
5



The Boston Store  
538-540 Washington Ave.



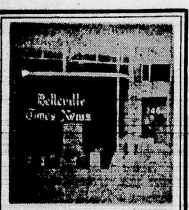
Vee Bee Esso  
Franklin Ave. cor. Jerusalem



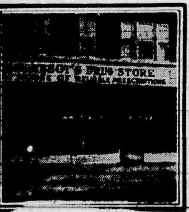
The Crescent Press  
136 Washington Ave.



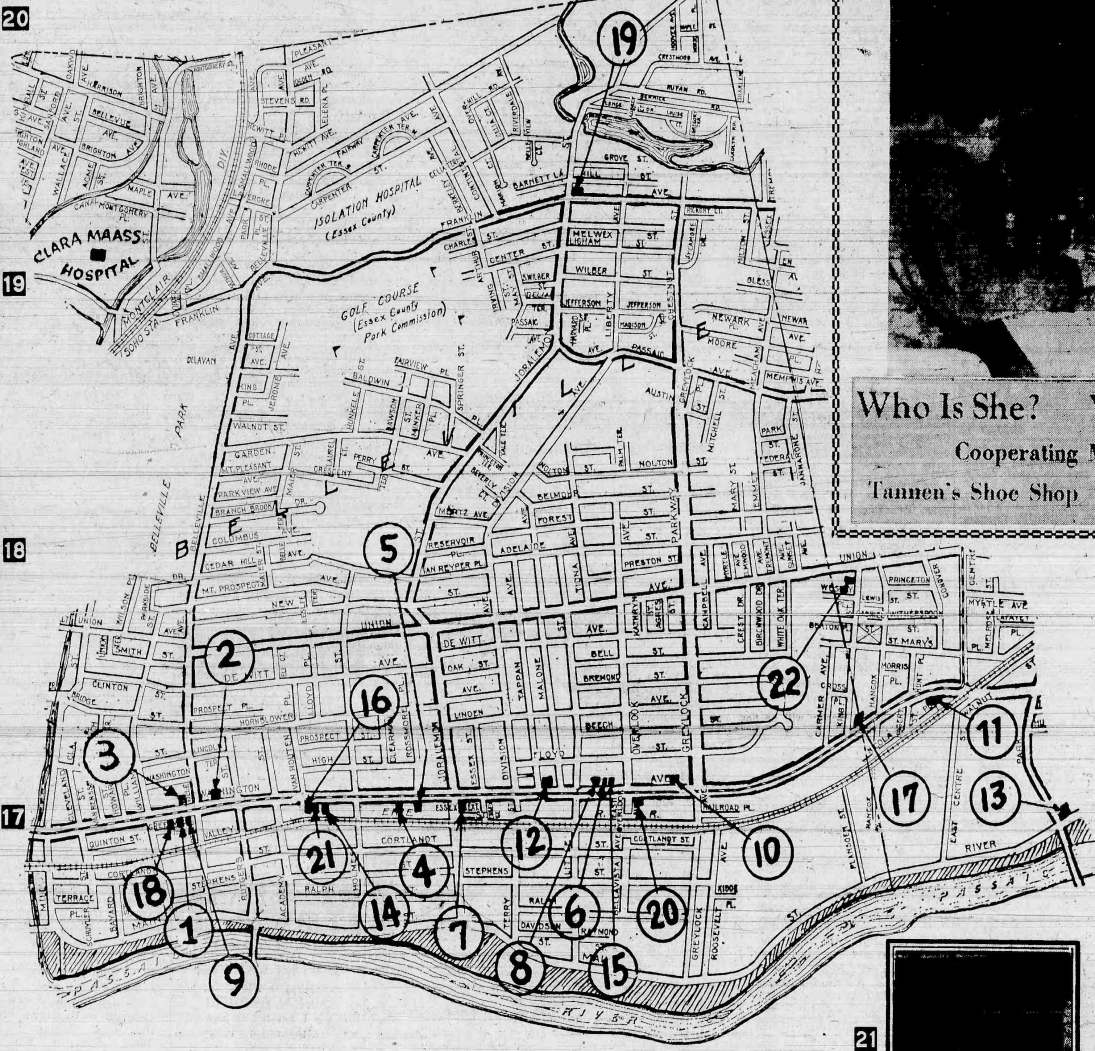
Christian's Restaurant  
751 Washington Ave.



Belleville Times-News  
246 Washington Ave.



Abbott's Drug Store  
931 Washington Ave.



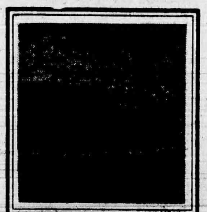
Who Is She? Where Is She?  
Cooperating Merchants:  
Tannen's Shoe Shop Muscara Music Co.



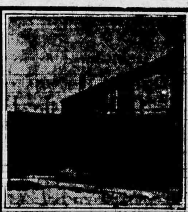
John's Restaurant  
599 Washington Ave.



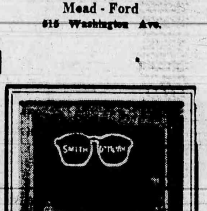
Goekeler's Quality Bakery  
Washington Ave. cor. Jerusalem



Belleville Travel Service  
246 Washington Ave.



Zincola's Bakery  
King St. at Union Ave., Noddy



Mead-Ford  
216 Washington Ave.

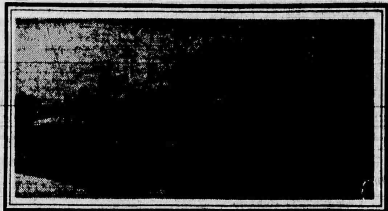
- |  |  |
|--|--|
| Alterations<br>14-MARY'S ALTERATION SHOP                     | Newspaper<br>16-BELLEVILLE TIMES-NEWS                          |
| Automobiles<br>11-BELLEVILLE-NUTLEY BUICK<br>8-MEAD-FORD     | Optician<br>9-WILLIAM C. SMITH                                 |
| Bakery<br>7-GOEKELER'S QUALITY BAKERY<br>22-ZINCOLA'S BAKERY | Restaurant<br>17-CHRISTIAN'S RESTAURANT<br>6-JOHN'S RESTAURANT |
| Diner<br>13-STEFANO'S DINER                                  | Savings & Loan Assn.<br>12-DE WITT SAVINGS & LOAN              |
| Department Stores<br>20-THE BOSTON STORE                     | Service Stations<br>19-VEE BEE ESSO                            |
| Drugs<br>15-ABBOTT'S DRUG STORE                              | Stationers<br>18-THE CRESCENT PRESS                            |
| Foods<br>4-ROYAL SHOP-RITE                                   | Taxi Cab<br>1-BELLEVILLE CAB                                   |
| Footwear - Men's - Women's<br>3-TANNEN'S SHOE SHOP           | Towing Service<br>5-JANNARONE'S SHELL STATION                  |
| Music<br>4-MUSCARA MUSIC CO.                                 | Travel Bureau<br>21-BELLEVILLE TRAVEL SERVICE                  |
|  | Wallpaper - Paints - Glass<br>10-THE GLASS CO.                 |



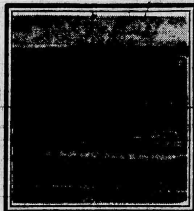
Mary's Alteration Shop  
523 Washington Ave.



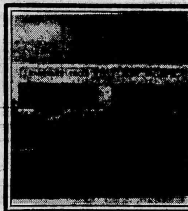
Stefano's Diner  
Park Ave. & River Rd., Noddy



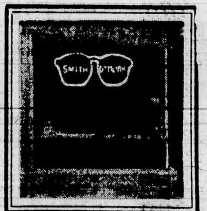
De Witt Savings & Loan  
463 Washington Ave.



Belleville-Nutley Buick  
66 Washington Ave.



The Glass Co.  
86 Washington Ave.



Wm. C. Smith, Optician  
146 Washington Ave.







**MASONRY**  
SAM RUSHING • MASON CONTRACTOR • Brick, plastering, chimney repair, stucco work and all kinds of mason work. Patios our specialty. 84 Blufffield Avenue, NORTON 7-2747. 6-671 TF

**PLASTERING AND PATCHING**  
Cement work No job too small. Forty years experience. J. Zeiss. Telephone Plymouth 9-7243. 7-1151 TF

**FRANK D'ARL**  
MASON CONTRACTOR  
A complete line of mason work. Brick, Stucco, patios etc. All work guaranteed. 439 Jordanmon St. Telephone PL 9-0852. PL 9-3174. 7-17-58 TF

**SAM YASSO** • General cement contractor. Garages, porches, steps, patios. Retaining walls, guaranteed for one year. No job too small. Free estimates given now for Spring work. North 7-2517 between 7:30 A.M. and 8 A.M. and afterwards 1:30 P.M. to 2:30 P.M. 3-1

**MOVING**  
JOE RAASER, Moving and Storage. Warehouse, 146 Little St., Belleville. Telephone Plymouth 9-1822. 7-23-53 TF

**PLUMBING**  
Windheim Plumbing & Heating Co.  
Gas Heat and Oil Heat  
418 Franklin Ave., N. 7-6896  
8 Evelyne Place, Nutley 2-16-61 TF

**JAEGER & SON**  
PLUMBING HEATING  
Electric Sewer Cleaning  
24 Home Service  
170 Park St., North 7-1504  
8-4-60 TF

**GAS HEAT INSTALLED**—Heating repairs. Conversion burners. Free estimates. Call North 7-3375. V. Shannon 8 Evelyne Place, Nutley 2-16-61 TF

**PLUMBING**  
JOHN M. MCHUGH  
PLUMBING HEATING  
CONTRACTOR  
Gas Heating  
Repairs New Work Alterations  
91 Dow Street, Belleville  
Plymouth 1-1092. 8-1-61 TF

**ROOFING AND SIDING**  
NUTLEY ROOFING CO.  
John Dunn, Prop.  
New Roofs—Old Ones Repaired  
Metal gutters and leaders our specialty.  
Aluminum, Asbestos and Asphalt Siding.  
14 Cleveland Ave., Telephone Nutley, N. J. North 7-1274. 7-7-55 TF

**HAROLD HARRISON & SON**  
Roofing. All work guaranteed. Slate repairs, new roofs, gutters and leaders, chimney repairs, aluminum siding and hot asphalt roofs. 313 Chestnut Street, Kearny, N.Y. 1-3319, WY 15497. (No toll charge.) 5-4-61 TF

**WE SPECIALIZE IN ALUMINUM SIDING**—also Asbestos Siding, Roofing, Asphalt Siding, Store Fronts, and Carpentry. Call Dan Construction Co. for free estimate. Insured and licensed dealer. PL 1-0721. 6-1-61 TF

**RUG CLEANING**  
RUG CLEANING—9 x 12 Dunham, \$5.64; 3 x 6 rug, 50¢, first month free. 54 cents month thereafter. Upholstered furniture cleaned, one sofa, two chairs, \$22.95. New carpet sold and installed. Meads Mule Co., 13 Franklin Avenue, Nutley, North 1-4305. 6-9 TF

**SERVICE**  
RONNIE'S TRUCKING • We clean Yards, Attics, Cellars and Factories Moving, hauling, painting inside or outside and repairs. Reasonable prices. No job too small. Plymouth 9-5897. 10-13-60 TF

**PASSAIC PRIVATE NURSING HOME**, for chronically ill, convalescent and bed-ridden. All female, day and night nurses. Telephone PPeacott 9-0028. 2-9-56 TF

**REPAIR SPECIAL**—We will repair any type or model sewing machine or vacuum cleaner within a 20 mile radius for \$2.99. Mitchell 3-5556. 1-11-62

**IT REALLY PAYS TO REPAIR** your old appliances. Toasters, irons, lamps, etc. Guaranteed repairs, sensible low prices. Phillips, Monroe and Myrtle, Passaic. Gregory 3-5667. 12-8-60 TF

Batteries & Accessories, Repairs All Makes of Hearing Aids. SOUTH BERGEN HEARING CENTER. Little's Pharmacy, 54 Franklin Avenue, North 7-0822. Geneva 8-1042. 12-22-54 TF

**ALL MAKES AUTOMATIC WASHERS, DRYERS, REFRIGERATORS, FREEZERS**, air conditioners repaired. Free autovervised Philco and Bendix service. 16 years experience. P. Connors Service, NO 7-9278. 3-6-58 U

**SERVICE**  
DAVIS TAYLOR SHADE SHOP  
Albert W. Taylor, Prop.  
Wholesale • Retail  
Window Shade Manufacturers  
Venetian Blinds  
350 Passaic Ave., North 7-0491. 7-11-58 TF

**A-1 PIANO TUNING**  
Repairing and polishing, players' specialties. Factory experience. 1910 All work guaranteed. Gigho, 205 Forest Street, Belleville. Telephone Plymouth 9-2614. 5-4-61 TF

**ALL MAKES OF ACCORDIONS REPAIRED**. Call North 7-6146. 7-11-58 TF

**SHORING**  
SAGGING WALLS, doors, partitions, front porches, garages and overhanging roofs, jacked up to proper level. Underpinning of masonry walls, also general contracting, Millwright and Rigging. All work guaranteed and insured.  
HARRY CAMERMAN  
WYMAN 1-4492—Humboldt 2-5899. 5-4-61 TF

**SEWING MACHINES**  
BRAND NEW ROUND BOBBIN Sewing Machine. Sews forward and reverse. \$17. Must sell. Mitchell 3-5558. 1-1-62

**ANY MAKE OR MODEL** expertly repaired. Estimate \$1. New and used sewing machines, \$19.50 and up. F. Wissing, 82 Watchung Ave., Upper Montclair, Pilgrim 6-1841. 1-4-62 TF

**SEWING MACHINE AND VACUUM CLEANER REPAIRS**—all makes, free estimates in advance, work done by SINGER trained mechanics. We will loan you substitute machine during repair work. Singer Sewing Center, 151 Washington Ave., Belleville, PL 9-1255, open Fri. till 9 P.M. 7-25

**TELEVISION**  
TELEVISION REPAIRS • A/V Video Service, 31 Holmes St., Nutley, North 1-1233 weekdays after 5:30 P.M., all day Saturday, Sunday Repairs and good guaranteed. 5-5-60 TF

**TILE CONTRACTORS**  
MARALDO  
Tile & Terrazzo Co.  
Industrial-Commercial Residential-Repairing  
62 Union Avenue, North 7-3021. 12-15-60 TF

**UPHOLSTERY**  
SLIP COVERS AND UPHOLSTERY, custom work at lowest prices. "The Little Shop with the Big Values," Czech Decorators, 196 Mill St., Belleville, Plymouth 9-4201. 10-5-58 TF

**KITCHEN AND DINETTE SETS REUPHOLSTERED** in modern plastic, classic patterns. Jerry Althoff, Telephone North 7-0440. 1-23-58 TF

**WANTED**  
WANTED — HOME FOR male German Shepherd dog, 14 months old, with AKC papers. Yours if you have home with running area. Call Plymouth 1-1097.

**WANTED TO BUY**  
CLEAN WHITE RAGS. Large pieces, no outions or other fasteners. 30 cents per pound. Bring to The Nutley Sun, 386 Franklin Avenue, Mondays or Thursdays only. 4-29-59 TF

**GOOD PIANO WANTED**—Grand or small size. Please call Mr. Heinz, Market 3-6665. 2-1

**WANTED TO RENT**  
BUSINESS WOMAN DESIRES 2 1/2 or 3 room unfurnished apartment in Nutley. Must be convenient to bus service. Call North 7-8455 after 5 P.M.

**WORK WANTED**  
IMPROVE YOUR PROPERTY. New sidewalks and repaving. New lawns and repair. All labor work and trucking. V. Sampaio, 79 Carner Avenue, Belleville, N. J. Telephone, Plymouth 8-5855. 7-11-58 TF

**NEVINS TRUCKING**—General cleaning and rubbish removal. Small moving jobs. Dump truck for hire. Telephone Plymouth 9-4778. 3-23-61 TF

## Advice On Filing Income Tax Given By Director

Don't delay filing that federal income tax return you just got in the mail — especially if you are one of the many millions who may have a tax refund coming. For the sooner you file, the sooner Internal Revenue Service can process your return and get your check to you.

This is the advice of Acting District Director Hook.

He added:

"If we have to give you a return pre-refund audit and thus delay your refund check, we will inform you of that fact by letter. But even in such cases, the earlier you file, the earlier we can get at your pre-refund audit."

Mr. Hook also had a few tips for early filers who want to receive their refunds as quickly as possible.

One is to make sure you don't omit any essential information in making out your return such as your signature (and that of your interest if it is a joint return), your Form W-2 reporting your tax withholding and your address as legible as you can print it.

The other tip, Mr. Hook said, is not to write for a few weeks asking where your refund is.

"If we have to stop to answer such letters," Mr. Hook said, "it will slow down the refunding process and delay your check that much longer."

"Interest which you received on which was credited to your account during 1961 must be reported on your federal income tax return," Kenneth O. Hook, Acting Director of Internal Revenue for the Newark District, said today.

He explained:

"Interest of state and municipal obligations is wholly exempt from tax, and interest on obligations of the federal government."

**WORK WANTED**  
SECRETARY — Mature Girl Friday. Varied experience. IBM typewriter. Write Box 69, The Nutley Sun, 386 Franklin Avenue, Nutley, N. J. 1-25

**YOUNG HOUSEWIFE** would like ironing to do in my own home. Reasonable. Call North 7-7741.

**WOMAN, GERMAN**, trustworthy, wishes days work — prefer business couple. \$10.00 plus carfare. Write Box 73, The Nutley Sun, Nutley, N. J.

**WORKING MOTHERS** of school age children No. 7 School district, Belleville. I will care for your children — lunch hours and after school — in my home. Call Plymouth 9-2819.

**ODD JOB SERVICE**. Cellars, attics and yards cleaned. Junk and rubbish removed. Telephone Pilgrim 4-3204. 3-12-59 TF

**USED CAR BUYS**

**WEEK END SPECIAL**  
'59 OLDS \$1595.  
Dynamic 88, 4 dr., R. & H. Hydramatic, P.S. & brakes, new car trade.

**'58 BUICK** \$1395.  
Roadmaster convertible, R. & H. Dynaflow, full power. New top, exceptional cond. Must be seen.

**'60 OPEL** \$1195.  
Station wagon, R. & H. real economy, extra clean.

**'59 BUICK** \$1595.  
Le Sabre, 4 dr. H.T., R. & H. Dynaflow, power steering & brakes, like new.

**'57 PONTIAC** \$695.  
Chiefest, 4 dr., Hydra, truly outstanding cond.

**'57 FORD** \$645.  
Fairlane 500 2 dr. H. T., R. & H., Automatic, Exceptionally Clean.

**'57 BUICK** \$595.  
Special, 4 dr. H.T., R. & H. Dynaflow.

**'56 BUICK** \$595.  
Special, 2 dr. H.T., R. & H. Dynaflow, power steering & brakes, sale priced.

**BEHAVIOR • NUTLEY**  
66 WASHINGTON AVE  
NUTLEY NJ 07050

**BEHAVIOR • NUTLEY**  
66 WASHINGTON AVE  
NUTLEY NJ 07050

**BEHAVIOR • NUTLEY**  
66 WASHINGTON AVE  
NUTLEY NJ 07050

**BEHAVIOR • NUTLEY**  
66 WASHINGTON AVE  
NUTLEY NJ 07050

Hook reminded those who employ four or more individuals on at least one day of each of 20 weeks in 1961, that they must file a return and pay the Federal Unemployment Tax. Mr. Hook explained that this return should be filed on or before Jan. 31, 1962, on Form 940, Employer's Annual Federal Unemployment Tax Return.

**TELEPHONE SERVICE**  
Wherever possible, the Internal Revenue Service will incorporate the most advanced developments in telephone service in providing tax information to individual taxpayers during the 1962 filing period, Acting District Director Hook said today.

**OLYMPIC BOWL**  
NOW OPEN  
NEW MODERN  
BILLIARD ROOM  
Always Open Bowling At Olympic  
BRING THE FAMILY FOR THE EVENING  
679 Washington Ave., Belleville Phone PL 1-2111

has been expanded each year to time in calling us," Mr. Hook said. "Right now we can give quick, explicit service. As the filing deadline grows nearer, however, lines will become jammed. Naturally, we ask that every taxpayer who calls us have his or her return in hand, along with any records relating to the problem, and that they have all the necessary facts and figures in mind."

No matter what you've been offered

**LEARNARD CHEVROLET**  
WILL BETTER THE DEAL!  
SEE US TODAY

514 Washington Ave., BELLEVILLE  
Open Evenings, Wed. 'til 6. Closed Sundays—PL 9-7200

# BIG BEEF SALE!

<b>Sirloin Steak</b> Lancaster Brand lb. <b>79¢</b>	<b>Eye Round Roast</b> Boneless lb. <b>99¢</b>
<b>Porterhouse Steak</b> Lancaster lb. <b>89¢</b>	<b>Top Sirloin Roast</b> lb. <b>99¢</b>
<b>Rib Roast</b> Oven Ready 1st Cuts Slightly Higher lb. <b>69¢</b>	<b>Short Ribs Beef</b> lb. <b>45¢</b>
<b>Chuck Roast</b> Bone In lb. <b>49¢</b>	<b>Lean Plate Beef</b> lb. <b>23¢</b>
<b>California Roast</b> lb. <b>55¢</b>	<b>Ground Beef</b> Lean—Regular lb. <b>49¢</b>
<b>Arm Pot Roast</b> lb. <b>63¢</b>	<b>Ground Chuck</b> lb. <b>85¢</b>
<b>Boneless Chuck Roast</b> lb. <b>83¢</b>	<b>Ground Round</b> lb. <b>99¢</b>
<b>Cross Rib Roast</b> Boneless lb. <b>85¢</b>	<b>Smoked Beef Tongues</b> lb. <b>55¢</b>
<b>Round Roast</b> Boneless Top or Bottom lb. <b>99¢</b>	<b>Beef Liver</b> lb. <b>49¢</b>
<b>Corned Beef</b> Brisket—Boneless lb. <b>85¢</b>	<b>Beef Ox Tails</b> lb. <b>29¢</b>

Green Giant Peas 2 17 oz. cans 37¢		Glenside Catsup 14 oz. bot. 15¢	
<b>Niblets Corn</b> 7 12 oz. 1		<b>Ideal Coffee</b> 1 lb. can 57¢	
<b>Tuna</b> Breast O' Chicken Solid White 3 7 oz. 1		<b>Margarine</b> Princess Solid lb. 15¢	
<b>Tomato Soup</b> Ideal 10 10 oz. 1		<b>Prune Juice</b> Ideal 3 32 oz. 1	
<b>Catsup</b> Pride of Farm 3 20 oz. 77¢		<b>Potatoes</b> Ideal Whole White 16 oz. can 10¢	
<b>Tomato Juice</b> Ideal 4 46 oz. 1		<b>Tomato Sauce</b> Hunt's 4 8 oz. 35¢	
<b>Dole Juice</b> Pineapple 3 46 oz. 79¢		<b>Green Beans</b> Ideal French Style 6 cans 1	
<b>Tomato</b> Progress Imported 3 5 oz. 19¢		<b>Dog Food</b> Fiesta—Chicken 7 16 oz. 1	
<b>Drinks</b> Hi-C Orange, Grape, Orange Pineapple 3 46 oz. 89¢		<b>Pears</b> Rose Croix Bartlett 3 29 oz. 89¢	
<b>Toilet Tissue</b> Hudson 4 rolls 45¢		<b>Coffee</b> Maxwell House 4c Off Label 1 lb. can 59¢	
<b>Margarine</b> Blue Bonnet 3 1 lb. 79¢		<b>Saltines</b> Marbis 1 lb. pkg. 19¢	

**FROZEN FOODS**

<b>Orange Juice</b> 6 6 oz. 1.00	<b>Potatoes</b> 8 9 oz. 1.00
<b>Libby's</b>	<b>Green Peas</b> 2 10 oz. 29¢
<b>Potatoes</b> 8 9 oz. 1.00	<b>Pot Pies</b> 6 8 oz. 1.00
<b>Libby's</b>	<b>Green Peas</b> 2 10 oz. 29¢
<b>Potatoes</b> 8 9 oz. 1.00	<b>Pot Pies</b> 6 8 oz. 1.00

**DAIRY SPECIALS**

<b>Velveeta</b> Kraft 2 lb. 79¢	<b>Cheese Spread</b> Glendal Club 2 lb. 69¢
<b>Cheese</b> Breakfast—Cream Temple Whipped 8 oz. 33¢	

**BAKED GOODS**

<b>Pies</b> YOUR CHOICE 2 for \$1.00	<b>White Bread</b> 2 loaves 25¢
--------------------------------------	---------------------------------

AR advertised prices effective through Sat., Jan. 20th.

**BE SURE TO TAKE ADVANTAGE OF ACME'S SENSATIONAL "OLD RED MILL" DINNERWARE OFFER!**

**FRUITS & VEGETABLES**  
Gold Seal Maine Premium Grade U. S. No. 1 Washed and Sized

**POTATOES**  
10 lb. bag **39¢**

**Apples** 4 b. 29¢  
**Carrots** 2 1 lb. pkgs. 19¢  
**Oranges** 5 b. 39¢

**OLD MASTERS ILLUSTRATED EDITION Holy Bible**

Section 2-15 only 99¢ each. De Luxe Lifetime Binder only 99¢.

Introductory Offer Section One only **29¢**

Virginia Lee — Peach or Pineapple.

**FREE! 100 S&H GREEN STAMPS**  
With this coupon and purchase of Section 1 Old Masters Illustrated Edition HOLY BIBLE

Name \_\_\_\_\_  
Address \_\_\_\_\_  
EXPIRES SAT., JAN. 27  
Limit One Coupon Per Shopping Party.

**FREE! 100 S&H GREEN STAMPS**  
In addition to your regular stamps, excluding Fluid Milk and Cigarettes. WITH \$10 PURCHASE OR MORE

Name \_\_\_\_\_  
Address \_\_\_\_\_  
EXPIRES SAT., JAN. 20  
Limit One Coupon Per Shopping Party.

**FREE! 30 S&H GREEN STAMPS**  
In addition to your regular stamps, with purchase of any volume of FUNK AND WAGNALL'S ENCYCLOPEDIA

Name \_\_\_\_\_  
Address \_\_\_\_\_



**Appointed to Post**  
Richard G. Post, Director of Sales, of Federal Industries, a division of Textron, Belleville, has appointed Bernard W. Frosh, field representative in the southern markets for upholstery, drapery and window treatments, to the position of district manager. He will be based in the New York City office and will be working mainly out of the New York City office.

**NOTICE**  
The Board of Education of the Town of Belleville, New Jersey, in accordance with the provisions of Chapter 201, P.L. 1943, will hold a PUBLIC HEARING on the tentative budget for the school year 1962-63 in the Auditorium of School Number Eight, at 8:00 p.m. on the evening of January 22, 1962. The proposed tentative budget will be on file and open to the examination of the public between the hours of 9:00 a.m. and 4:30 p.m. at the office of the Board of Education from the date of publication until January 29, 1962, with the exception of Saturday and Sunday.

**BUDGET STATEMENT**  
**SCHOOL YEAR 1962-1963**  
**SCHOOL DISTRICT OF BELLEVILLE**

ENROLLMENTS	1960-61 (Actual)	1961-62 (Estimated)	1962-63 (Estimated)
Resident Av. Daily Enrollment	5180	5280	5268
ADD: ADE - Tuition Pupils Rec'd.	29	20	32
Total Average Daily Enrollment	5209	5300	5300

**SOURCES OF REVENUE**

CURRENT EXPENSE	1960-61 (Actual)	1961-62 (Anticipated)	1962-63 (Anticipated)
Appropriation Balance .....	\$ 229,506.75		
Balance Appropriated .....		\$ 108,500.00	\$ 125,000.00
Local Tax Levy .....	2,076,739.00	2,151,575.00	2,181,017.00
State Aid .....	297,242.00	285,000.00	300,000.00
Federal Aid .....	3,663.94	3,200.00	2,000.00
Tuition .....	29,046.00	22,600.00	25,000.00
Miscellaneous Revenue .....	4,734.62		
(A) TOTAL CURRENT EXPENSE	\$2,640,932.31	\$2,580,875.00	\$2,633,017.00

**CAPITAL OUTLAY**

Appropriation Balance	\$ 11,548.39		
Balance Appropriated		\$ 922.50	
Local Tax Levy			\$ 62,481.50
State Aid	38,247.00	5,000.00	500.00
Federal Aid	1,876.12		
Withdrawal Capital Reserve			44,596.00
(B) TOTAL CAPITAL OUTLAY	\$ 51,671.51	\$ 5,000.00	\$ 108,500.00

**DEBT SERVICE**

Appropriation Balance	\$ 4,005.83		
Balance Appropriated			
Local Tax Levy	76,997.00	79,934.00	83,062.00
State Aid	41,135.00	28,246.00	10,300.50
(C) TOTAL DEBT SERVICE	\$ 122,135.83	\$ 108,180.00	\$ 93,362.50

**CAPITAL RESERVE FUND**

State Building Aid		44,596.00	
(D) TOTAL CAPITAL RESERVE FUND		\$ 44,596.00	

**TOTAL REVENUE**

ALL ACCOUNTS	\$2,814,739.65	\$2,738,651.00	\$2,834,879.50
--------------	----------------	----------------	----------------

\*Reflects Actual Appropriation Balance July 1, 1960.

**APPROPRIATIONS**

1960-61 Expenditures	1961-62 Appropriations	1962-63 Appropriations
-------------------------	---------------------------	---------------------------

**ADMINISTRATION**

Salaries	\$ 70,459.79	\$ 78,085.00	\$ 85,950.00
Contracted Services	4,723.49	4,500.00	4,500.00
All Other Expenses	8,220.13	7,600.00	7,600.00

**INSTRUCTION**

Salaries	\$1,733,897.98	\$1,904,925.00	\$1,944,566.00
Textbooks	12,758.96	18,000.00	18,750.00
Libraries & Audio Vis.			
Mat.	17,442.01	13,850.00	13,250.00
Teaching Supplies	50,055.36	47,000.00	43,000.00
All Other Expenses	7,239.87	6,500.00	6,200.00

**ATTENDANCE AND HEALTH SERVICES**

Salaries - Attendance	\$ 3,250.63	\$ 5,400.00	\$ 5,600.00
- Attendance		100.00	100.00
Salaries - Health	18,200.00	18,800.00	29,300.00
All Other Expenses			
Health	788.85	900.00	900.00

**TRANSPORTATION**

Salaries	\$ 3,159.28		\$ 824.00
Contracted Services and Public Carriers	20,099.32	20,740.00	20,650.00
Replacement Dist. Owned Buses	1,434.56		
Janitorial - Pupils	197.28	160.00	200.00
Transportation			
All Other Expenses - Oper. & Maint.	580.96	1,100.00	800.00

**OPERATION**

Salaries	\$158,906.40	\$172,650.00	\$185,200.00
Contracted Services	1,180.00	1,300.00	1,300.00
Heat	20,219.67	21,500.00	21,500.00
Utilities	25,727.13	27,700.00	27,700.00
Supplies	8,775.65	8,400.00	8,800.00
All Other Expenses	34.00	300.00	300.00

**MAINTENANCE**

Salaries	\$ 50,733.44	\$ 51,800.00	\$ 50,000.00
Contracted Services	21,890.47	35,500.00	35,200.00
Replacement (Purchase) of Equipment	29,439.87	19,500.00	9,000.00
All Other Expenses	15,968.79	17,500.00	16,500.00

**FIXED CHARGES**

Employee Retirement - Contrib.	\$ 33,362.14	\$ 35,277.00	\$ 35,762.00
Insurance	10,714.98	12,000.00	11,050.00
Other Fixed Charges		10,000.00	10,000.00

**EXPENDITURES TO OTHER DISTRICTS**

Tuition	\$ 7,595.42	\$ 8,000.00	\$ 8,000.00
---------	-------------	-------------	-------------

**SUNDY ACCOUNTS**

Salaries	\$ 6,810.35	\$ 7,300.00	\$ 5,515.00
Other Expense	83.24	300.00	100.00
Expenditures to Cover Deficits	1,350.00	2,500.00	1,000.00

**STUDENT BODY ACTIVITIES (Athletics)**

Salaries	\$ 10,815.02	\$ 10,807.00	\$ 10,850.00
Other Expense	2,297.36	2,231.00	2,650.00
Expenditures to Cover Deficits	2,500.00	3,000.00	1,500.00

**COMMUNITY SERVICES**

Salaries - Recreation	\$ 684.07	\$ 900.00	\$ 800.00
Salaries - Civic Activities	3,610.38	2,750.00	3,500.00
ADULT EDUCATION	1,734.30	1,800.00	1,600.00

**TOTAL CURRENT EXPENSES**

	\$2,366,437.09	\$2,580,875.00	\$2,633,017.00
--	----------------	----------------	----------------

**CAPITAL OUTLAY**

Sides	\$ 13,880.00		
Buildings	29,543.44		
Equipment	4,084.31	5,000.00	96,500.00
TOTAL CAPITAL OUTLAY	\$ 47,507.75	\$ 5,000.00	\$ 108,500.00

**DEBT SERVICE**

Principal	\$ 102,000.00	\$ 93,000.00	\$ 63,000.00
Interest	18,135.00	15,180.00	30,362.50
TOTAL DEBT SERVICE	\$ 120,135.00	\$ 108,180.00	\$ 93,362.50

**CAPITAL RESERVE FUND**

(D) TOTAL CAPITAL RESERVE FUND		\$ 44,596.00	
--------------------------------	--	--------------	--

**GRAND TOTAL - ACCOUNTS**

	\$2,534,089.84	\$2,738,651.00	\$2,834,879.50
--	----------------	----------------	----------------

**CURRENT OPERATING APPROPRIATION BALANCES**

JUNE 30, 1961			
CURRENT EXPENSES	\$ 274,495.22		
CAPITAL OUTLAY	4,133.76		
DEBT SERVICE	2,000.83		
TOTAL BALANCES JUNE 30, 1961	\$ 280,629.81		

**TOTAL EXPENDITURES AND BALANCES JUNE 30, 1961**

	\$2,814,739.65		
--	----------------	--	--

DATED: January 18, 1962

BOARD OF EDUCATION, BELLEVILLE, NEW JERSEY

BY: MRS. MARY B. SHADER, SECRETARY

# Walking In Winter Has Dangers Too

Most older persons know and dread the dangers of slippery streets and sidewalks. Child and young adults — confident of their ability to "stand on their own feet" — are more inclined to take slippery underfooting in stride.

Actually, the danger exists for all pedestrians. Chief Spatz, director of Police George H. Spatz doesn't have to dig very deeply into his accident files to prove it.

"I've been doing considerable talking about the dangers of winter driving," the chief said recently, "but folks on foot had better be careful this winter, too."

"The ice and snow that make it hard for a driver to control his car also threaten pedestrian safety. During the ice-free months we become more dependent on the motorist's ability to avoid striking us than we realize. Now we have to be doubly careful to stay out of his way."

The chief listed the following points for pedestrians to ponder:

1) It's always more difficult for a driver to see you than it is for you to see his car. This is especially true after dark, or when there's rain or snow in the air. The windshield wiper may not be up to par.

2) If a driver fails to see you in good time, it's virtually impossible for him to turn aside or stop safely if the street is slippery.

## SLIPPERY STREETS

3) While a pedestrian is well-advised to cross streets at the corners — summer and winter — he should consider that, in the winter, streets may be very slippery at these points. A succession of cars, stopping and starting, may have polished the snow and ice treacherously smooth.

4) Assuming that you can walk on packed snow or ice without falling, or that a car can stop without skidding, is the kind of

wishful thinking that fills accident files.

Chief Spatz did not stop short of suggesting specific pedestrian precautions.

Walkers should wear light-colored clothing after dark, he said. If pavements are wet and slippery they should use appropriate footwear. Good rubbers, he pointed out, have "treads" just like good tires.

## SHARP LOOK-OUT

Above all, the pedestrian should keep a sharp look-out for approaching vehicles, and never assume that he has been noticed by the drivers of those vehicles.

The chief also appealed to pedestrians to be considerate of drivers who are having difficulty maintaining up-hill momentum on slippery streets this winter.

"Don't step in front of a driver and make him stop for you," he advised. "He may have trouble getting moving again, especially if he's trying to go without tire chains—and your little thoughtless act could cause a traffic stoppage that could last for hours."

The chief appealed to homeowners to make a special effort to keep their sidewalks clear all winter long, and to keep handy a supply of sand to spread on icy sidewalks to prevent falls which could result in painful and serious injury.

"You can stand proud in your neighborhood if you help passers-by stand straight on your side walk," he said.

minutes and Charlie, our singer. Make this club a real hum-dinger. There's friendliness, helpfulness, sociability and cheer. From the beginning, to the end of each year. Comedians, singers, card players and bowlers on the green. The cleverest bunch I have ever seen.

We fellows that play cards more and more. Wonder how the green's always get a high bowling score. We are a five wire gang that really click. When one joins he usually sticks.

What wisdom can you find that is greater than kindness?

JEAN JACQUES ROUSSEAU

# WASHINGTON TV

40 WASHINGTON AVE.  
BELLEVILLE, N. J.

Repairs on All Makes Radio & Television  
For SERVICE Call

**PL 1-2107**

HOURS: MON. - SAT. 9 A.M. - 9 P.M.

## Howard Savings Ups Its Dividend

William L. Maude, chairman of the board, and John W. Kress, president of The Howard Savings Institution, announced that the bank's board of managers has declared a dividend of four per cent current rate on all regular savings accounts of \$10 to \$25,000 for the quarter which began Dec. 1, 1961. In addition, dividends are paid from day of deposit to the end of the quarter at The Howard, and are credited and compounded four times a year.

"Speaking for the board of managers," Messrs. Maude and Kress said, "we were most happy to be able to declare this higher dividend rate because it is the primary concern of all of us at The Howard to see that the people of New Jersey get the best possible return on their savings."

Established in 1857, The Howard Savings Institution, with seven offices in Newark, South Orange and North Caldwell — is the largest savings bank in New Jersey and one of the largest in the nation. Its assets exceed \$465,000,000.

**FREE CATALOG**  
**SUCCESSFUL**  
PART TIME-FULL TIME  
**CAREERS**  
IN  
**Electrolysis**  
Phone, Visit or Write  
**KREE**  
Institute of Electrolysis  
Dept. Q, 140 W. 42nd St., N.Y. 36  
BR 2-6719  
World Famous Training Center

**Complete Heating Systems**  
**For All Your Heating Needs Call**  
**PLYMOUTH 9-1907**  
46 Eugene Pl. Belleville

**OUR FUEL OIL MAKES WARM FRIENDS**

**New new low cost installation prices.**

**Low cost service contract including parts coverage**

**Convenient monthly budget plan.**

**24 hour emergency service.**

**HILLTOP RIVIERA OIL CO., INC.**

Now more than ever  
the "number one investment"  
for your savings!

# FULL RATE-NO WAIT

4

%

A YEAR

CURRENT QUARTERLY RATE

Your savings start earning dividends immediately at the full rate of 4% a year

**PAYABLE MARCH 1, 1962**  
**ON ALL BALANCES**  
of \$10 to \$25,000

Dividends from DAY OF DEPOSIT

Compounded and Credited

**4 TIMES A YEAR**

March 1, June 1, September 1, December 1

Open your savings account now. Call at any of The Howard's seven convenient offices...or mail the coupon with your check or money order and leave the rest to us. We'll mail your passbook and self-addressed, postage-prepaid envelopes for future deposits or withdrawals.

Remember, your Howard passbook can be used at any Howard office.

## The HOWARD SAVINGS Institution

The Largest Savings Bank in New Jersey  
Established 1857  
Assets in excess of \$465,000,000

MAIN OFFICE: 768 BROAD ST., NEWARK 1, N.J.  
OTHER OFFICES IN NEWARK:  
Bloomfield Ave. at Clifton Ave. South Orange Ave. at Sandford Ave.  
Springfield Ave. at Bergen St. Plane St. at Raymond Blvd.  
IN SOUTH ORANGE: South Orange Ave. near Lackawanna Station.  
IN NORTH CALDWELL: 27 Bloomfield Ave. near Mountain Ave.

FILL OUT AND SEND THIS COUPON TO OPEN YOUR SAVINGS ACCOUNT

THE HOWARD SAVINGS INSTITUTION  
MAIN OFFICE: 768 BROAD STREET, NEWARK 1, N.J.

I enclose \$ \_\_\_\_\_ Please open a savings account and send the passbook to me.

(To Open Your Account) Make out your check or money order to The Howard Savings Institution. For a Trust Account, write on the back of check "In trust for" and the full name of your beneficiary. For a Joint Account, write "Jointly with" and the name of the other person to share the account.

Write in address of office in which you wish your account to be opened.

Name \_\_\_\_\_  
Address \_\_\_\_\_  
City \_\_\_\_\_ Zone \_\_\_\_\_ State \_\_\_\_\_

Enclose with check or money order if